

— ABLYBIO, Help Your Research



Amyloid beta A4 Rabbit mAb

货号: CY5248

产品信息

反应	Human,Mouse,Rat
宿主	Rabbit
克隆性	Monoclonal
预测反应	
应用	WB IHC IP FC ICC/IF
推荐浓度	WB: 1:500 - 1:2000 IHC: 1:50 - 1:200 IF/ICC: 1:50 - 1:200 IP: 1:20 - 1:50 FC: 1:20 - 1:50
理论分子量	86kDa
实测分子量	95kDa
形式	Liquid
保存条件	Store at -20°C. Avoid freeze / thaw cycles. Buffer: PBS with 0.75% BSA,50% glycerol,pH7.3.
偶联物	Unconjugated
阳性对照	HeLa,U-87MG,Mouse brain,Rat brain,293T
细胞定位	Membrane,Single-pass type I membrane protein,clathrin-coated pit
纯化	Affinity purification

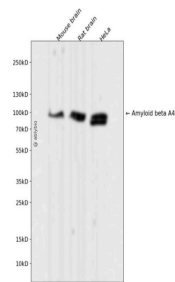
抗原信息

抗原信息	Recombinant fusion protein corresponding to Human Amyloid beta A4 .
------	---

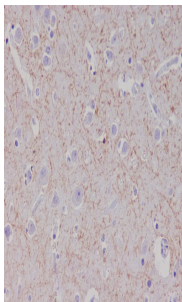
靶点信息

研究背景	This gene encodes a cell surface receptor and transmembrane precursor protein that is cleaved by secretases to form a number of peptides. Some of these peptides are secreted and can bind to the acetyltransferase complex APBB1/TIP60 to promote transcriptional activation, while others form the protein basis of the amyloid plaques found in the brains of patients with Alzheimer disease. In addition, two of the peptides are antimicrobial peptides, having been shown to have bacteriocidal and antifungal activities. Mutations in this gene have been implicated in autosomal dominant Alzheimer disease and cerebroarterial amyloidosis (cerebral amyloid angiopathy). Multiple transcript variants encoding several different isoforms have been found for this gene. [provided by RefSeq, Aug 2014]
基因ID	351
基因名	APP
Swiss	P05067 (https://www.uniprot.org/uniprotkb/P05067/entry)
别名	Amyloid beta A4,Amyloid beta A4 Rabbit mAb,APP,ABPP,APPI,Alzheimer disease amyloid A4 protein homolog,Alzheimer disease amyloid protein,Amyloid precursor protein,Amyloid-beta (A4) precursor protein,Amyloid-beta A4 protein,Cerebral vascular amyloid peptide,PreA4

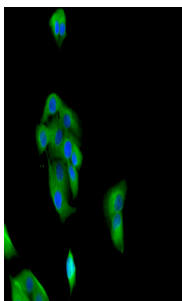
产品验证



Western blot analysis of Amyloid beta A4 expressed in Mouse brain,Rat brain,HeLa using Amyloid beta A4 Rabbit mAb at 1:1000. Secondary antibody: HRP Goat Anti-Rabbit IgG (H+L) at 1:5000. Lysates/proteins: 30ug per lane. Blocking buffer: 5% non-fat dry milk in TBST. Detection: ECL Enhanced Kit. Exposure time: 120s.



Immunohistochemical analysis of paraffin-embedded human brain, using Amyloid beta A4 Antibody .



Immunofluorescence analysis of A549 cells labelling Amyloid beta A4 with . The cells were fixed with cold 100% methanol (10min, 4°C) and blocked in 1% BSA/10% normal goat serum/0.3M glycine in 0.1% PBS-Tween 20 for 1h. The cells were then incubate with Goat Anti-Rabbit IgG Fluor488 (1:200, shown in green) at room temperature for 1h.

实验步骤

