

Vinculin Rabbit mAb

货号: B31426

产品信息

反应	Human,Mouse,Rat
宿主	Rabbit
克隆性	Monoclonal
预测反应	
应用	WB IF/ICC IP
推荐浓度	WB: 1:500 - 1:2000 IF/ICC: 1:50 - 1:200 IP: 1:20 - 1:50
理论分子量	125kDa
实测分子量	125kDa
形式	Liquid
保存条件	Store at -20°C. Avoid freeze / thaw cycles. Buffer: PBS with 0.75% BSA,50% glycerol,pH7.3.
偶联物	Unconjugated
阳性对照	HeLa,HepG2,RD,Mouse liver,Mouse brain,Rat liver,Rat skeletal muscle,Rat brain
细胞定位	Cell junction,Cell membrane,Cytoplasm,Cytoplasmic side,Peripheral membrane protein,adherens junction ,cytoskeleton,focal adhesion
纯化	Affinity purification

抗原信息

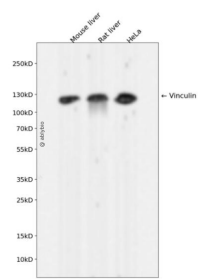
抗原信息	Recombinant fusion protein corresponding to Human Vinculin.
序列	DAKAVAGNISDPGLQKSFLDSGYRILGAVAKVREAFQPQEPDFPPPPPDLEQLRLTDELAPPKPPLPEGEVPPPRPPPEEK DEEFPEQKAGEVINQPMMM

靶点信息

研究背景	Vinculin is a cytoskeletal protein associated with cell-cell and cell-matrix junctions, where it is thought to function as one of several interacting proteins involved in anchoring F-actin to the membrane. Defects in VCL are the cause of cardiomyopathy dilated type 1W. Dilated cardiomyopathy is a disorder characterized by ventricular dilation and impaired systolic function, resulting in congestive heart failure and arrhythmia. Multiple alternatively spliced transcript variants have been found for this gene, but the biological validity of some variants has not been determined. [provided by RefSeq, Jul 2008]
------	---

基因ID	7414
基因名	VCL
Swiss	P18206
别名	CMD1W; CMH15; HEL114; MV; MVCL

产品验证



Western blot analysis of Vinculin expressed in Mouse liver,Rat liver,HeLa using Vinculin Rabbit mAb at 1:1000. Secondary antibody: HRP Goat Anti-Rabbit IgG (H+L) at 1:5000. Lysates/proteins: 30ug per lane. Blocking buffer: 5% non-fat dry milk in TBST. Detection: ECL Enhanced Kit. Exposure time: 120s.

实验步骤

访问官网浏览详情: www.ablybio.cn