

Cytokeratin 12 Rabbit mAb

货号: **B31344**

产品信息

反应	Human,Mouse,Rat
宿主	Rabbit
克隆性	Monoclonal
预测反应	
应用	WB IHC IF/ICC
推荐浓度	WB: 1:500 - 1:2000 IHC: 1:50 - 1:200 IF/ICC: 1:50 - 1:200
理论分子量	54kDa
实测分子量	54kDa
形式	Liquid
保存条件	Store at -20°C. Avoid freeze / thaw cycles. Buffer: PBS with 0.75% BSA,50% glycerol,pH7.3.
偶联物	Unconjugated
阳性对照	Rat eye
细胞定位	cytoskeleton,cytosol,extracellular exosome
纯化	Affinity purification

抗原信息

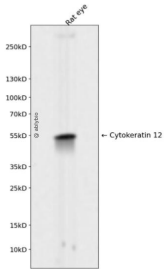
抗原信息	Recombinant fusion protein corresponding to Human Cytokeratin 12.
序列	EMQIESLNEELAYMKKNHEDELQSFVGGPGEVSVEMDAAPGVDLTRLNNDMRAQYETIAEQNRKDAAEAWFIEKSGELRK EISTNTEQLQSSKSEVTDLRRAFQNLIEIQSQLAMKKSLEDSLAEAEAGDYCAQLSQVQQLISNLEAQLLQVRADAERQNV DHQRLLNVKARLELEIETYRRLLDGEAQDGLLEESLFVTDKSKSQAQSTDSSKDPTKTRKIKTVVQEMVNGEVVSSQVQEIE ELM

靶点信息

研究背景	KRT12 encodes the type I intermediate filament chain keratin 12, expressed in corneal epithelia. Mutation s in this gene lead to Meesmann corneal dystrophy.
基因ID	3859

基因名	KRT12
Swiss	Q99456
别名	KRT12; K12; keratin 12

产品验证



Western blot analysis of Cytokeratin 12 expressed in Rat eye using Cytokeratin 12 Rabbit mAb at 1:1000. Secondary antibody: HRP Goat Anti-Rabbit IgG (H+L) at 1:5000. Lysates/proteins: 30ug per lane. Blocking buffer: 5% non-fat dry milk in TBST. Detection: ECL Enhanced Kit. Exposure time: 120s.

实验步骤

访问官网浏览详情: www.ablybio.cn