

TAX1BP3 Rabbit mAb

货号: **B31320**

产品信息

反应	Human,Mouse,Rat
宿主	Rabbit
克隆性	Monoclonal
预测反应	
应用	WB IHC FC
推荐浓度	WB: 1:500 - 1:2000 IHC: 1:50 - 1:200 FC: 1:20 - 1:50
理论分子量	13kDa
实测分子量	14kDa
形式	Liquid
保存条件	Store at -20°C. Avoid freeze / thaw cycles. Buffer: PBS with 0.75% BSA,50% glycerol,pH7.3.
偶联物	Unconjugated
阳性对照	293T,Mouse kidney
细胞定位	Cell membrane,Cytoplasm,Cytoplasmic side,Nucleus,Peripheral membrane protein
纯化	Affinity purification

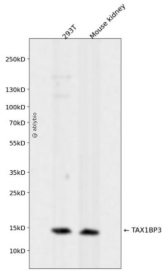
抗原信息

抗原信息	Recombinant fusion protein corresponding to Human TAX1BP3 .
序列	MSYIPGQPVTAVVQRVEIHKLRQGENLILGFSIGGGIDQDPSQNPFSEDKTDKGIYVTRVSEGGPAEIALQLIGDKIMQVN GWDMTMVTHDQARKRLTKRSEEVVRLVTRQSLQKAVQQSMLS

靶点信息

研究背景	This gene encodes a small, highly conserved protein with a single PDZ domain. PDZ (PSD-95/Discs large/ZO-1 homologous) domains promote protein-protein interactions that affect cell signaling, adhesion, protein scaffolding, and receptor and ion transporter functions. The encoded protein interacts with a large number of target proteins that play roles in signaling pathways; for example, it interacts with Rho A and glutaminase L and also acts as a negative regulator of the Wnt/beta-catenin signaling pathway. This protein was first identified as binding to the T-cell leukaemia virus (HTLV1) Tax oncoprotein. Overexpression of this gene has been implicated in altered cancer cell adhesion, migration and metastasis. The encoded protein also modulates the localization and density of inwardly rectifying potassium channel 2.3 (Kir2.3). To date, this protein has been shown to play a role in cell proliferation, development, stress response, and polarization. Alternative splicing results in multiple transcript variants encoding distinct isoforms.
基因ID	30851
基因名	TAX1BP3
Swiss	O14907
别名	TAX1BP3;TIP-1;TIP1

产品验证



Western blot analysis of TAX1BP3 expressed in 293T, Mouse kidney using TAX1BP3 Rabbit mAb at 1:1000. Secondary antibody: HRP Goat Anti-Rabbit IgG (H+L) at 1:5000. Lysates/proteins: 30ug per lane. Blocking buffer: 5% non-fat dry milk in TBST. Detection: ECL Enhanced Kit. Exposure time: 120s.

实验步骤

访问官网浏览详情: www.ablybio.cn