

Neutrophil Elastase Rabbit mAb

货号: B31313

产品信息

反应	Human
宿主	Rabbit
克隆性	Monoclonal
预测反应	
应用	WB IHC IF/ICC FC
推荐浓度	WB: 1:500 - 1:2000 IHC: 1:50 - 1:200 IF/ICC: 1:50 - 1:200 FC: 1:20 - 1:50
理论分子量	28kDa
实测分子量	29kDa
形式	Liquid
保存条件	Store at -20°C. Avoid freeze / thaw cycles. Buffer: PBS with 0.75% BSA,50% glycerol,pH7.3.
偶联物	Unconjugated
阳性对照	Rat spleen
细胞定位	cell surface,cytoplasm,cytosol,extracellular exosome,extracellular region,extracellular space,phagocytic vesicle
纯化	Affinity purification

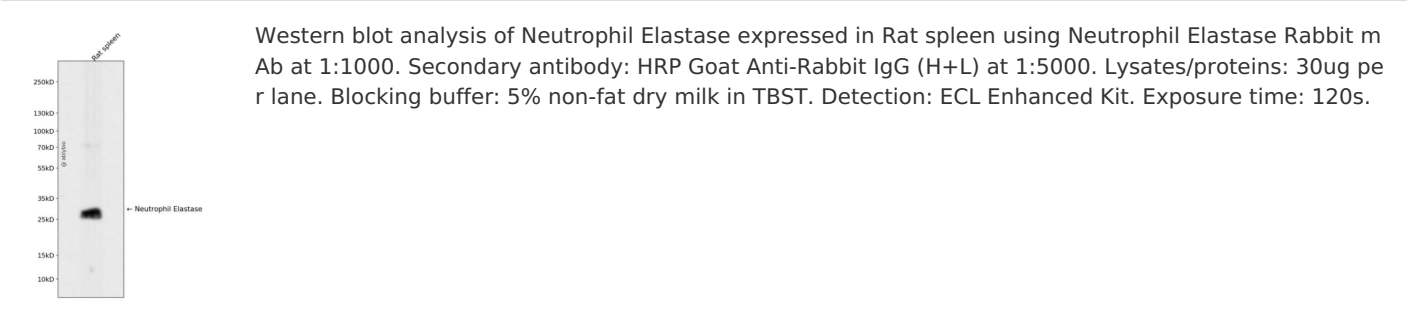
抗原信息

抗原信息	Recombinant fusion protein corresponding to Human Neutrophil Elastase.
序列	VLQELNVTVVTSLCRRSNVCTLVRGRQAGVCFGDSGSPLCNGLIHGIAFVRGGCASGLYPDAFAPVAQFVNWIDSIIQR SEDNPCPHRPDPDPASRTH

靶点信息

研究背景	Elastases form a subfamily of serine proteases that hydrolyze many proteins in addition to elastin. Humans have six elastase genes which encode structurally similar proteins. The encoded preproprotein is proteolytically processed to generate the active protease. Following activation, this protease hydrolyzes proteins within specialized neutrophil lysosomes, called azurophilic granules, as well as proteins of the extracellular matrix. The enzyme may play a role in degenerative and inflammatory diseases through proteolysis of collagen-IV and elastin. This protein also degrades the outer membrane protein A (OmpA) of E. coli as well as the virulence factors of such bacteria as Shigella, Salmonella and Yersinia. Mutations in this gene are associated with cyclic neutropenia and severe congenital neutropenia (SCN). This gene is present in a gene cluster on chromosome 19.
基因ID	1991
基因名	ELANE
Swiss	P08246
别名	ELANE;ELA2;GE;HLE;HNE;NE;PMN-E;SCN1

产品验证



实验步骤

访问官网浏览详情: www.ablybio.cn