

MLKL Rabbit mAb

货号: B31260

产品信息

反应	Human
宿主	Rabbit
克隆性	Monoclonal
预测反应	
应用	WB IHC
推荐浓度	WB: 1:500 - 1:2000 IHC: 1:50 - 1:200
理论分子量	53kDa/54kDa
实测分子量	54kDa
形式	Liquid
保存条件	Store at -20°C. Avoid freeze / thaw cycles. Buffer: PBS with 0.75% BSA,50% glycerol,pH7.3.
偶联物	Unconjugated
阳性对照	HepG2,NIH/3T3,HUVEC,Mouse liver,Mouse thymus,Rat liver
细胞定位	Cell membrane,Cytoplasm
纯化	Affinity purification

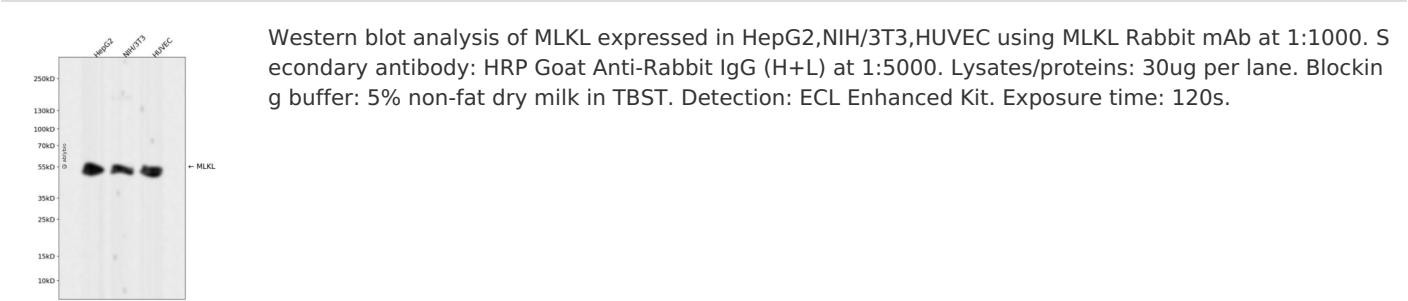
抗原信息

抗原信息	Recombinant fusion protein corresponding to Human MLKL.
序列	LGQVIHKRCEEMKYCKKQCRRLGHRVLGLIKPLEMLQDQGKRSVPSEKLTAMNRFKAALEEANGEIEKFSNRSNICRFLTA SQDKILFKDVNRKLSDVWKELSLLLQVEQRMVPSPISQGASWAQEDQQDAEDRRRAFQMLRRDNEKIEASLRRLEINMK EIKETLRQYLPPKCMQEIPQEQI

靶点信息

研究背景	This gene belongs to the protein kinase superfamily. The encoded protein contains a protein kinase-like domain; however, is thought to be inactive because it lacks several residues required for activity. This protein plays a critical role in tumor necrosis factor (TNF)-induced necroptosis, a programmed cell death process, via interaction with receptor-interacting protein 3 (RIP3), which is a key signaling molecule in necroptosis pathway. Inhibitor studies and knockdown of this gene inhibited TNF-induced necrosis. High levels of this protein and RIP3 are associated with inflammatory bowel disease in children. Alternatively spliced transcript variants have been described for this gene.
基因ID	197259
基因名	MLKL
Swiss	Q8NB16
别名	MLKL; hMLKL; mixed lineage kinase domain-like protein

产品验证



实验步骤

访问官网浏览详情: www.ablybio.cn