

LXR alpha Rabbit mAb

货号: B31170

产品信息

反应	Human,Mouse,Rat
宿主	Rabbit
克隆性	Monoclonal
预测反应	
应用	WB IF/ICC FC
推荐浓度	WB: 1:500 - 1:2000 IF/ICC: 1:50 - 1:200 FC: 1:20 - 1:50
理论分子量	43kDa/45kDa/50kDa
实测分子量	50kDa
形式	Liquid
保存条件	Store at -20°C. Avoid freeze / thaw cycles. Buffer: PBS with 0.75% BSA,50% glycerol,pH7.3.
偶联物	Unconjugated
阳性对照	HepG2,Mouse kidney
细胞定位	Nucleus
纯化	Affinity purification

抗原信息

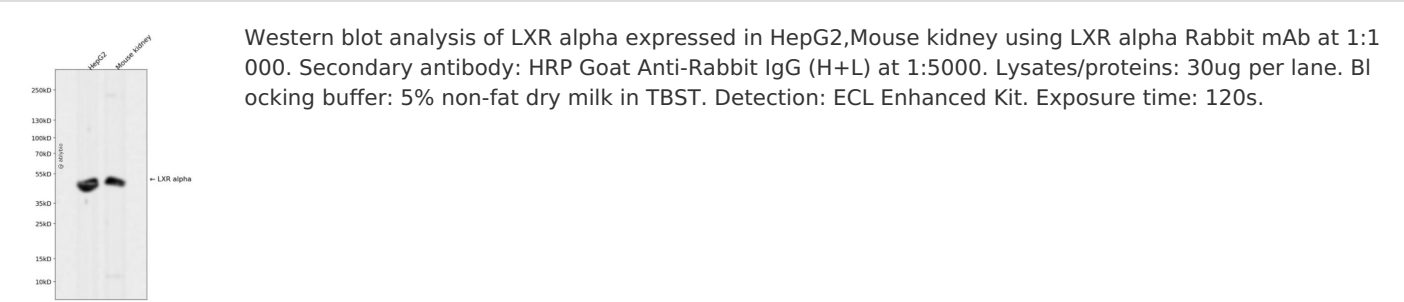
抗原信息	Recombinant fusion protein corresponding to Human LXR alpha.
序列	QAGMREECVLSEEQIRLKKLKRQEEQAHATSLPPRASSPPQILPQLSPEQLGMIEKLVAQQQCNRRSFS

靶点信息

研究背景	The protein encoded by this gene belongs to the NR1 subfamily of the nuclear receptor superfamily. The NR1 family members are key regulators of macrophage function, controlling transcriptional programs involved in lipid homeostasis and inflammation. This protein is highly expressed in visceral organs, including liver, kidney and intestine. It forms a heterodimer with retinoid X receptor (RXR), and regulates expression of target genes containing retinoid response elements. Studies in mice lacking this gene suggest that it may play an important role in the regulation of cholesterol homeostasis. Alternatively spliced transcript variants encoding different isoforms have been found for this gene.
------	--

基因ID	10062
基因名	NR1H3
Swiss	Q13133
别名	NR1H3;LXR-a;LXRA;RLD-1;LXR alpha

产品验证



实验步骤

访问官网浏览详情: www.ablybio.cn