

# Rad21 Rabbit mAb

货号: B31134

## 产品信息

|       |   |
|-------|---|
| 反应    | Human,Mouse,Rat   |
| 宿主    | Rabbit  |
| 克隆性   | Monoclonal  |
| 预测反应  |   |
| 应用    | WB FC   |
| 推荐浓度  | <b>WB:</b> 1:500 - 1:2000<br><b>FC:</b> 1:20 - 1:50   |
| 理论分子量 | 71kDa   |
| 实测分子量 | 130KDa  |
| 形式    | Liquid  |
| 保存条件  | Store at -20°C. Avoid freeze / thaw cycles.<br>Buffer: PBS with 0.75% BSA,50% glycerol,pH7.3. |
| 偶联物   | Unconjugated  |
| 阳性对照  | Jurkat,Mouse thymus,C6  |
| 细胞定位  | condensed nuclear chromosome,cytosol,nuclear matrix,nucleoplasm,nucleus,spindle pole          |
| 纯化    | Affinity purification   |

## 抗原信息

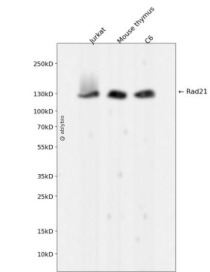
|      |  |
|------|--|
| 抗原信息 | Recombinant fusion protein corresponding to Human Rad21 .  |
| 序列   | DNVSMGGPDSPDSVDPVEPMPTMTDQTTLVPNEEEAFALEPIDITVKETKAKRKRKLIVDSVKELDSKTIRAQLSDYSDIVT<br>TLDLAPPTKKLMMWKETGGVEKLFSLPAQPLWNNRLLKLFTRCLTPLVPEDLRKRRKGGEADNLDEFKKEFENPEVPRED |

## 靶点信息

|      |  |
|------|--|
| 研究背景 | The protein encoded by this gene is highly similar to the gene product of Schizosaccharomyces pombe ra d21, a gene involved in the repair of DNA double-strand breaks, as well as in chromatid cohesion during mitosis. This protein is a nuclear phospho-protein, which becomes hyperphosphorylated in cell cycle M ph ase. The highly regulated association of this protein with mitotic chromatin specifically at the centromere region suggests its role in sister chromatid cohesion in mitotic cells. [provided by RefSeq, Jul 2008] |
| 基因ID | 5885   |

|       |  |
|-------|--|
| 基因名   | RAD21  |
| Swiss | O60216                                       |
| 别名    | CDLS4; HR21; HRAD21; MCD1; NXP1; SCC1; hHR21 |

产品验证



Western blot analysis of Rad21 expressed in Jurkat, Mouse thymus, C6 using Rad21 Rabbit mAb at 1:1000. Secondary antibody: HRP Goat Anti-Rabbit IgG (H+L) at 1:5000. Lysates/proteins: 30ug per lane. Blocking buffer: 5% non-fat dry milk in TBST. Detection: ECL Enhanced Kit. Exposure time: 120s.

实验步骤

访问官网浏览详情: [www.ablybio.cn](http://www.ablybio.cn)