

GGT1 Rabbit mAb

货号: **B31113**

产品信息

反应	Human
宿主	Rabbit
克隆性	Monoclonal
预测反应	
应用	WB IHC
推荐浓度	WB: 1:500 - 1:2000 IHC: 1:50 - 1:200
理论分子量	24kDa/39kDa/61kDa
实测分子量	50-60kDa
形式	Liquid
保存条件	Store at -20°C. Avoid freeze / thaw cycles. Buffer: PBS with 0.75% BSA,50% glycerol,pH7.3.
偶联物	Unconjugated
阳性对照	Jurkat,Mouse kidney
细胞定位	Cell membrane,Single-pass type II membrane protein
纯化	Affinity purification

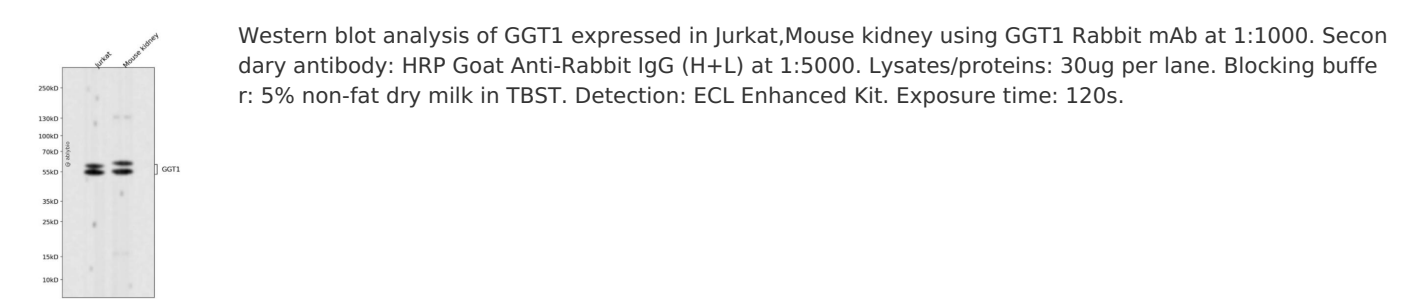
抗原信息

抗原信息	Recombinant fusion protein corresponding to Human GGT1.
序列	KPEFYTPDDGGTAHLSVVAEDGSAVSATSTINLYFGSKVRSPVSGILFNNEMDDFSSPSITNEFGVPPSPANFIQPGKQPLS SMCPTIMVGQDQGVRMVVGAAGGTQITTATALAIYNLWFGYDVKRAVEEPRLHNQLLPNVTTVERNIDQAVTAALETRHH HTQIASTFIQAVVQAIVRTAGGWAAASDSRKGGEAGY

靶点信息

研究背景	The enzyme encoded by this gene is a type I gamma-glutamyltransferase that catalyzes the transfer of the glutamyl moiety of glutathione to a variety of amino acids and dipeptide acceptors. The enzyme is composed of a heavy chain and a light chain, which are derived from a single precursor protein. It is expressed in tissues involved in absorption and secretion and may contribute to the etiology of diabetes and other metabolic disorders. Multiple alternatively spliced variants have been identified. There are a number of related genes present on chromosomes 20 and 22, and putative pseudogenes for this gene on chromosomes 2, 13, and 22.
基因ID	2678
基因名	GGT1
Swiss	P19440
别名	GGT1;CD224;D22S672;D22S732;GGT;GGT 1;GTG

产品验证



实验步骤

访问官网浏览详情: www.ablybio.cn