

CHM Rabbit mAb

货号: B31112

产品信息

反应	Human,Mouse,Rat
宿主	Rabbit
克隆性	Monoclonal
预测反应	
应用	WB IF/ICC
推荐浓度	WB: 1:500 - 1:2000 IF/ICC: 1:50 - 1:200
理论分子量	95kDa
实测分子量	95kDa
形式	Liquid
保存条件	Store at -20°C. Avoid freeze / thaw cycles. Buffer: PBS with 0.75% BSA,50% glycerol,pH7.3.
偶联物	Unconjugated
阳性对照	293T
细胞定位	Cytoplasm,cytosol
纯化	Affinity purification

抗原信息

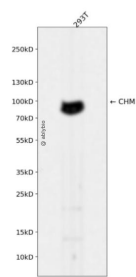
抗原信息	Recombinant fusion protein corresponding to Human CHM.
序列	MADTLPSEFDVIVIGTGLPESIIAAACSRSGRRVLHVDSRSYGGNWASFSGLLSWLKEYQENS <div>SDSPVWQDQILE</div> <div>NEEAIALSRKDKTIQHVEV</div>

靶点信息

研究背景	<p>This gene encodes component A of the RAB geranylgeranyl transferase holoenzyme. In the dimeric holoe nzyme, this subunit binds unprenylated Rab GTPases and then presents them to the catalytic Rab GGtas e subunit for the geranylgeranyl transfer reaction. Rab GTPases need to be geranylgeranyled on either on e or two cysteine residues in their C-terminus to localize to the correct intracellular membrane. Mutations in this gene are a cause of choroideremia; also known as tapetochoroidal dystrophy (TCD). This X-linked d isease is characterized by progressive dystrophy of the choroid, retinal pigment epithelium and retina. Alt ernatively spliced transcript variants have been found for this gene.</p>
------	-----------------------------------------------------------------------------------------------------------------------------------------------------------------------------------------------------------------------------------------------------------------------------------------------------------------------------------------------------------------------------------------------------------------------------------------------------------------------------------------------------------------------------------------------------------------------------------------------------------------------------------------------------------------------------------------------------------------------------------

基因ID	1121
基因名	CHM
Swiss	P24386
别名	CHM; DXS540; GGTA; HSD-32; REP-1; TCD; CHM; Rab escort protein 1

产品验证



Western blot analysis of CHM expressed in 293T using CHM Rabbit mAb at 1:1000. Secondary antibody: HRP Goat Anti-Rabbit IgG (H+L) at 1:5000. Lysates/proteins: 30ug per lane. Blocking buffer: 5% non-fat dry milk in TBST. Detection: ECL Enhanced Kit. Exposure time: 120s.

实验步骤

访问官网浏览详情: www.ablybio.cn