

# PSB9 / LMP2 Rabbit mAb

货号: B31035

产品信息

|       |   |
|-------|---|
| 反应    | Human,Mouse,Rat   |
| 宿主    | Rabbit  |
| 克隆性   | Monoclonal  |
| 预测反应  |   |
| 应用    | WB IF/ICC FC  |
| 推荐浓度  | <b>WB:</b> 1:500 - 1:2000<br><b>IF/ICC:</b> 1:50 - 1:200<br><b>FC:</b> 1:20 - 1:50            |
| 理论分子量 | 22kDa/23kDa   |
| 实测分子量 | 21kDa   |
| 形式    | Liquid  |
| 保存条件  | Store at -20°C. Avoid freeze / thaw cycles.<br>Buffer: PBS with 0.75% BSA,50% glycerol,pH7.3. |
| 偶联物   | Unconjugated  |
| 阳性对照  | THP-1,DU145,Mouse liver   |
| 细胞定位  | Cytoplasm,Nucleus   |
| 纯化    | Affinity purification   |

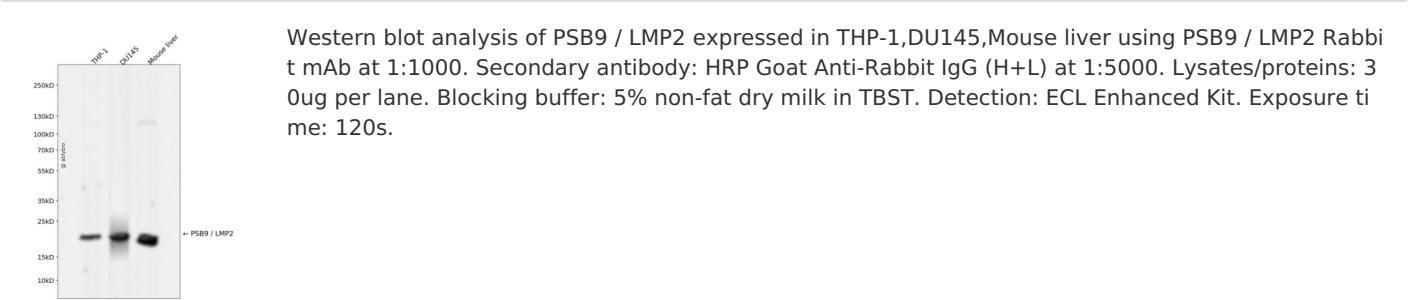
抗原信息

|      |  |
|------|--|
| 抗原信息 | Recombinant fusion protein corresponding to Human PSB9 / LMP2.   |
| 序列   | MLRAGAPTGDLPRAGEVHTGTTIMAVEFDGGVVMGSDSRVSAGEAVVNRVFDKLSPLHERIYCALSGSAADAQAVADM<br>AAYSQLHGHIELEEPPLVLAAANVVRNISKYREDLSAHLMVAGWDQREGGQVYGTGGMLTRQPFAIGGSGSTFIYGYV<br>DAAYKPGMSPEECRRFTTDAIALAMSRDGSSGGVIYLVITAAGVDHRVILGNELPKFYDE |

靶点信息

|       |  |
|-------|--|
| 研究背景  | The proteasome is a multicatalytic proteinase complex with a highly ordered ring-shaped 20S core structure. The core structure is composed of 4 rings of 28 non-identical subunits; 2 rings are composed of 7 alpha subunits and 2 rings are composed of 7 beta subunits. Proteasomes are distributed throughout eukaryotic cells at a high concentration and cleave peptides in an ATP/ubiquitin-dependent process in a non-lysosomal pathway. An essential function of a modified proteasome, the immunoproteasome, is the processing of class I MHC peptides. This gene encodes a member of the proteasome B-type family, also known as the T1B family, that is a 20S core beta subunit. This gene is located in the class II region of the MHC (major histocompatibility complex). Expression of this gene is induced by gamma interferon and this gene product replaces catalytic subunit 1 (proteasome beta 6 subunit) in the immunoproteasome. Proteolytic processing is required to generate a mature subunit. |
| 基因ID  | 5698   |
| 基因名   | PSMB9  |
| Swiss | P28065   |
| 别名    | PSMB9;LMP2;PSMB6i;RING12;beta1i  |

产品验证



实验步骤

访问官网浏览详情: [www.ablybio.cn](http://www.ablybio.cn)