

Cathepsin D Rabbit mAb

货号: B31009

产品信息

反应	Human,Mouse
宿主	Rabbit
克隆性	Monoclonal
预测反应	
应用	WB IHC ICC IP FC
推荐浓度	WB: 1:500 - 1:2000 IHC: 1:50 - 1:200 ICC: 1:50 - 1:200 IP: 1:20 - 1:50 FC: 1:20 - 1:50
理论分子量	46kDa/28kDa
实测分子量	46kDa/28kDa
形式	Liquid
保存条件	Store at -20°C. Avoid freeze / thaw cycles. Buffer: PBS with 0.75% BSA,50% glycerol,pH7.3.
偶联物	Unconjugated
阳性对照	A375,HepG2,MCF7,Mouse brain,Mouse kidney,Mouse spleen
细胞定位	Lysosome,Melanosome,Secreted,extracellular space
纯化	Affinity purification

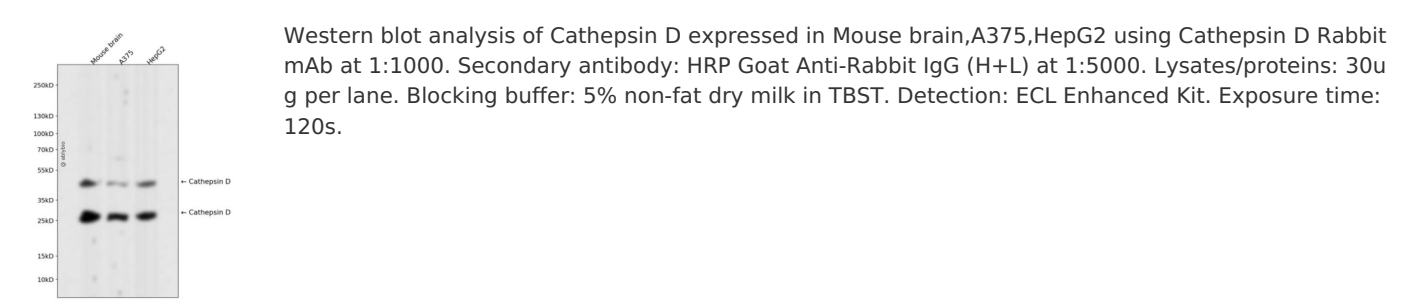
抗原信息

抗原信息	Recombinant fusion protein corresponding to Human Cathepsin D.
序列	KAIGAVPLIQGEYMIPCEKVSTLPAILTKLGGKGYKLSPEDYTLKVSQAGKTLCLSGFMGMDIPPPSGPLWILGDVFIGRYYT VFDRDNNRVGFAEAARL

靶点信息

研究背景	This gene encodes a member of the A1 family of peptidases. The encoded preproprotein is proteolytically processed to generate multiple protein products. These products include the cathepsin D light and heavy chains, which heterodimerize to form the mature enzyme. This enzyme exhibits pepsin-like activity and plays a role in protein turnover and in the proteolytic activation of hormones and growth factors. Mutations in this gene play a causal role in neuronal ceroid lipofuscinosis-10 and may be involved in the pathogenesis of several other diseases, including breast cancer and possibly Alzheimer's disease. [provided by RefSeq, Nov 2015]
基因ID	1509
基因名	CTSD
Swiss	P07339
别名	CLN10;CPSD;HEL-S-130P;Cathepsin D;CTSD

产品验证



实验步骤

访问官网浏览详情: www.ablybio.cn