

Anti-XLF Rabbit mAb

货号: B30959

产品信息

反应	Human,Mouse,Rat
宿主	Rabbit
克隆性	Monoclonal
预测反应	
应用	WB IHC IF/ICC FC
推荐浓度	WB: 1:500 - 1:2000 IHC: 1:50 - 1:200 IF/ICC: 1:50 - 1:200 FC: 1:20 - 1:50
理论分子量	33kDa/35kDa
实测分子量	39kDa
形式	Liquid
保存条件	Store at -20°C. Avoid freeze / thaw cycles. Buffer: PBS with 0.75% BSA,50% glycerol,pH7.3.
偶联物	Unconjugated
阳性对照	HeLa
细胞定位	Nucleus
纯化	Affinity purification

抗原信息

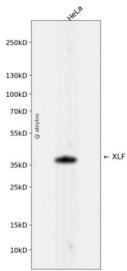
抗原信息	Recombinant fusion protein corresponding to Human Anti-XLF.
序列	MEELEQGLLMQPWAWLQLAENSLAKVFITKQGYALLVSDLQQVWHEQVDTSVVSQRAKELNKRLTAPPAFLCHLDNL LRPLLKDAAHPSSEATFSCDCVADALILRVRSELSGLPFYWNFHCMLASPSLVSQHLIRPLMGMSLALQCQVRELATLLHMK DLEIQDYQESGATLIRDRLKTEPFEEENSFLEQFMIEKLPEACSIGDGKPFVMNLQDLYMAVTTQEVQVGQKHQAGDPHT SNSASLQGIDSQCVNQPEQLVSSAPTLSAPEKESTGTSGPLQRPQLSKVKRKKPRGLFS

靶点信息

研究背景	Double-strand breaks in DNA result from genotoxic stresses and are among the most damaging of DNA lesions. This gene encodes a DNA repair factor essential for the nonhomologous end-joining pathway, which preferentially mediates repair of double-stranded breaks. Mutations in this gene cause different kinds of severe combined immunodeficiency disorders.
------	-------------------------------------------------------------------------------------------------------------------------------------------------------------------------------------------------------------------------------------------------------------------------------------------------------------------------------------------------------------------

基因ID	79840
基因名	NHEJ1
Swiss	Q9H9Q4
别名	NHEJ1;XLF

产品验证



Western blot analysis of XLF expressed in HeLa using Anti-XLF Rabbit mAb at 1:1000. Secondary antibody : HRP Goat Anti-Rabbit IgG (H+L) at 1:5000. Lysates/proteins: 30ug per lane. Blocking buffer: 5% non-fat dry milk in TBST. Detection: ECL Enhanced Kit. Exposure time: 120s.

实验步骤

访问官网浏览详情: www.ablybio.cn