

E2F1 Rabbit mAb

货号: B30925

产品信息

| | |
|-------|--|
| 反应 | Human,Mouse,Rat |
| 宿主 | Rabbit |
| 克隆性 | Monoclonal |
| 预测反应 | |
| 应用 | WB IHC IF/ICC IP FC |
| 推荐浓度 | WB: 1:500 - 1:2000 IHC: 1:50 - 1:200 IF/ICC: 1:50 - 1:200 IP: 1:20 - 1:50 FC: 1:20 - 1:50 |
| 理论分子量 | 46kDa |
| 实测分子量 | 65kDa |
| 形式 | Liquid |
| 保存条件 | Store at -20°C. Avoid freeze / thaw cycles. Buffer: PBS with 0.75% BSA,50% glycerol,pH7.3. |
| 偶联物 | Unconjugated |
| 阳性对照 | HeLa,A-431,HT-29 |
| 细胞定位 | Nucleus |
| 纯化 | Affinity purification |

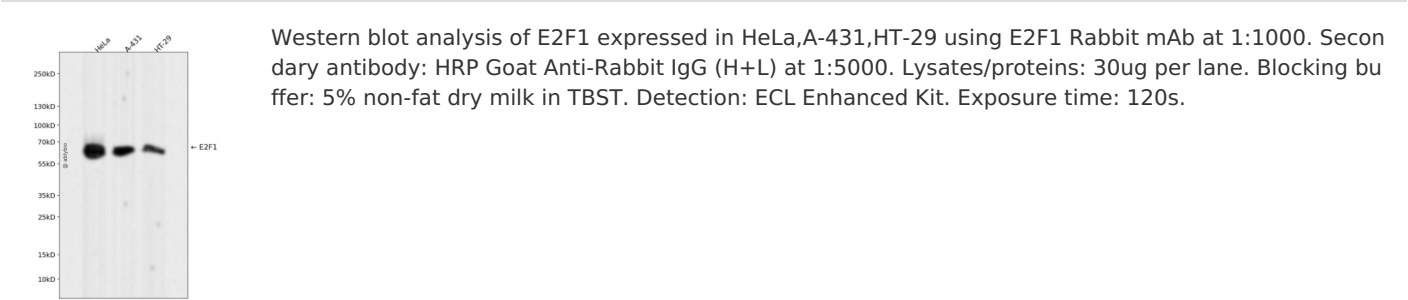
抗原信息

| | |
|------|---|
| 抗原信息 | Recombinant fusion protein corresponding to Human E2F1. |
| 序列 | GGRLEGLTQDLRQLQESEQQLDHLMNICTTQLRLLSEDTDSQRLAYVTCQDLRSIADPAEQMVMVIKAPPETQLQAVDSS ENFQISLKSQGPIDVFLCPEE |

靶点信息

| | |
|-------|--|
| 研究背景 | The protein encoded by this gene is a member of the E2F family of transcription factors. The E2F family plays a crucial role in the control of cell cycle and action of tumor suppressor proteins and is also a target of the transforming proteins of small DNA tumor viruses. The E2F proteins contain several evolutionally conserved domains found in most members of the family. These domains include a DNA binding domain, a dimerization domain which determines interaction with the differentiation regulated transcription factor proteins (DP), a transactivation domain enriched in acidic amino acids, and a tumor suppressor protein association domain which is embedded within the transactivation domain. This protein and another 2 members, E2F2 and E2F3, have an additional cyclin binding domain. This protein binds preferentially to retinoblastoma protein pRB in a cell-cycle dependent manner. It can mediate both cell proliferation and p53-dependent/independent apoptosis. |
| 基因ID | 1869 |
| 基因名 | E2F1 |
| Swiss | Q01094 |
| 别名 | E2F-1;RBAP1;RBBP3;RBP3;E2F1 |

产品验证



实验步骤

访问官网浏览详情: www.ablybio.cn