

14-3-3 Rabbit mAb

货号: B30827

产品信息

反应	Human,Mouse,Rat
宿主	Rabbit
克隆性	Monoclonal
预测反应	
应用	WB IHC FC
推荐浓度	WB: 1:500 - 1:2000 IHC: 1:50 - 1:200 FC: 1:20 - 1:50
理论分子量	28kDa
实测分子量	28kDa
形式	Liquid
保存条件	Store at -20°C. Avoid freeze / thaw cycles. Buffer: PBS with 0.75% BSA,50% glycerol,pH7.3.
偶联物	Unconjugated
阳性对照	HT-29,A-549,NIH/3T3,Jurkat,Mouse lung,Mouse kidney,Rat spleen
细胞定位	cytoplasm,cytosol,extracellular exosome,focal adhesion,melanosome,perinuclear region of cytoplasm
纯化	Affinity purification

抗原信息

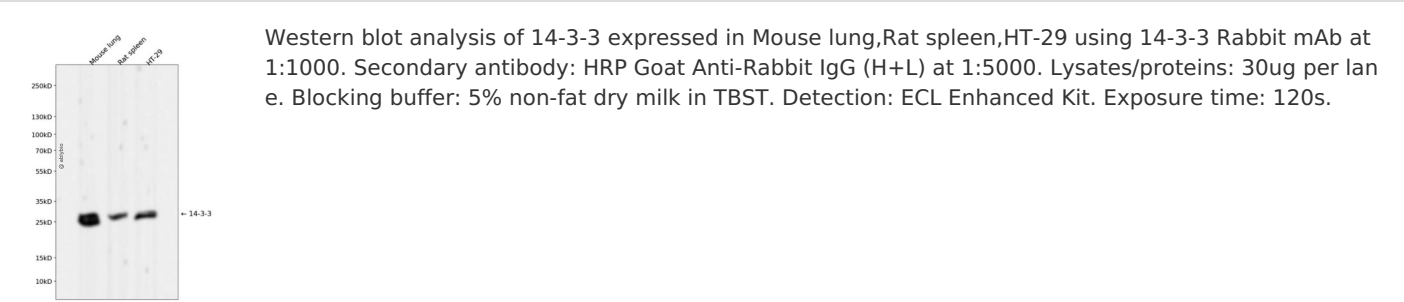
抗原信息	Recombinant fusion protein corresponding to Human 14-3-3.
序列	MTMDKSELVQKAKLAEQAERYDDMAAAMKAVTEQGHELSNEERNLLSVAYKNVVGARRSSWRVISSIEQKTERNEKKQQ MGKEYREKIEAELQDICNDVL

靶点信息

研究背景	This gene encodes a protein belonging to the 14-3-3 family of proteins, members of which mediate signal transduction by binding to phosphoserine-containing proteins. This highly conserved protein family is found in both plants and mammals. The encoded protein has been shown to interact with RAF1 and CDC25 phosphatases, suggesting that it may play a role in linking mitogenic signaling and the cell cycle machinery. Two transcript variants, which encode the same protein, have been identified for this gene. [provided by RefSeq, Jul 2008]
------	---

基因ID	7529,7534
基因名	YWHAB,YWHAZ
Swiss	P31946/P63104
别名	GW128; HEL-S-1; HS1; KCIP-1; YWHAA;14-3-3

产品验证



实验步骤

访问官网浏览详情: www.ablybio.cn