

# KMT1B / SUV39H2 Rabbit mAb

货号: B30811

产品信息

反应	Human,Mouse,Rat
宿主	Rabbit
克隆性	Monoclonal
预测反应	
应用	WB IHC IP
推荐浓度	<b>WB:</b> 1:500 - 1:2000 <b>IHC:</b> 1:50 - 1:200 <b>IP:</b> 1:20 - 1:50
理论分子量	26kDa/39kDa/46kDa
实测分子量	47kDa
形式	Liquid
保存条件	Store at -20°C. Avoid freeze / thaw cycles. Buffer: PBS with 0.75% BSA,50% glycerol,pH7.3.
偶联物	Unconjugated
阳性对照	Mouse testis,Rat testis
细胞定位	Chromosome,Nucleus,centromere
纯化	Affinity purification

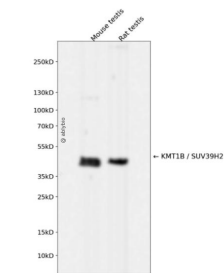
抗原信息

抗原信息	Recombinant fusion protein corresponding to Human KMT1B / SUV39H2.
序列	CCPAEAGVLLAYNKNQKIPPGTPIYECNSRCQCGPDCPNRIVQKGTQYSLCIFRTSNGRGWGVKTLVKIKRMSFVMEYV GEVITSEEAERRGQFYDNKGITYLFDLDYESDEFTVDAARYGNVSHFVNHSCDPNLQVFNVFIDNLDTRLPRIALFSTRITN AGEELTFDYQMKGSGDISSDSIDHSPAKKRVRTVCKCGAVTCRGYLN

靶点信息

研究背景	Histone methyltransferase that specifically trimethylates 'Lys-9' of histone H3 using monomethylated H3 'Lys-9' as substrate. H3 'Lys-9' trimethylation represents a specific tag for epigenetic transcriptional repression by recruiting HP1 (CBX1, CBX3 and/or CBX5 proteins to methylated histones. Mainly functions in heterochromatin regions, thereby playing a central role in the establishment of constitutive heterochromatin at pericentric and telomere regions. H3 'Lys-9' trimethylation is also required to direct DNA methylation at pericentric repeats. SUV39H1 is targeted to histone H3 via its interaction with RB1 and is involved in many processes, such as cell cycle regulation, transcriptional repression and regulation of telomere length. May participate in regulation of higher-order chromatin organization during spermatogenesis. Recruited by the large PER complex to the E-box elements of the circadian target genes such as PER2 itself or PER1, contributes to the conversion of local chromatin to a heterochromatin-like repressive state through H3 'Lys-9' trimethylation.
基因ID	79723
基因名	SUV39H2
Swiss	Q9H5I1
别名	SUV39H2;KMT1B

产品验证



Western blot analysis of KMT1B / SUV39H2 expressed in Mouse testis,Rat testis using KMT1B / SUV39H2 Rabbit mAb at 1:1000. Secondary antibody: HRP Goat Anti-Rabbit IgG (H+L) at 1:5000. Lysates/proteins: 30ug per lane. Blocking buffer: 5% non-fat dry milk in TBST. Detection: ECL Enhanced Kit. Exposure time: 120s.

实验步骤

访问官网浏览详情: [www.ablybio.cn](http://www.ablybio.cn)