

CRYAB Rabbit mAb

货号: B30809

产品信息

| | |
|-------|--|
| 反应 | Human,Rat |
| 宿主 | Rabbit |
| 克隆性 | Monoclonal |
| 预测反应 | |
| 应用 | WB IHC IF/ICC IP |
| 推荐浓度 | WB: 1:500 - 1:2000 IHC: 1:50 - 1:200 IF/ICC: 1:50 - 1:200 IP: 1:20 - 1:50 |
| 理论分子量 | 20kDa |
| 实测分子量 | 22kDa |
| 形式 | Liquid |
| 保存条件 | Store at -20°C. Avoid freeze / thaw cycles. Buffer: PBS with 0.75% BSA,50% glycerol,pH7.3. |
| 偶联物 | Unconjugated |
| 阳性对照 | U-87MG,293T,A-549,Mouse brain,Mouse heart,Mouse kidney,Mouse lung,Rat heart |
| 细胞定位 | Cytoplasm,Nucleus |
| 纯化 | Affinity purification |

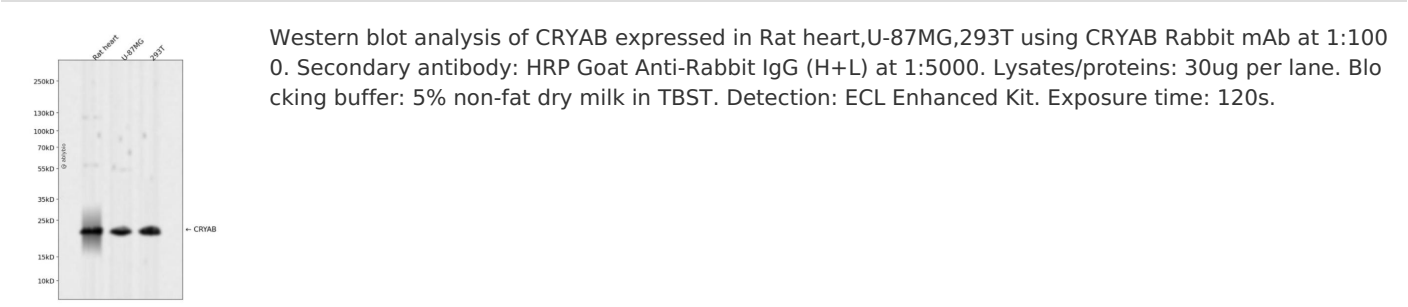
抗原信息

| | |
|------|--|
| 抗原信息 | Recombinant fusion protein corresponding to Human CRYAB. |
| 序列 | MDIAIHHPWIRRPFFPFHSPSRLFDQFFGEHLLESDFPTSTLSLSPFYLRPPSFLRAPSWFDTGLSEMRLEKDRFSVNLDVK HFSPEELKVKVLGDVIEVHGKHEERQDEHGFIREFHRKYRIPADVDPLTITSSLSSDGVLTVNGPRKQVSGPERTIPITREE KPAVTAAPKK |

靶点信息

| | |
|-------|---|
| 研究背景 | Mammalian lens crystallins are divided into alpha, beta, and gamma families. Alpha crystallins are composed of two gene products: alpha-A and alpha-B, for acidic and basic, respectively. Alpha crystallins can be induced by heat shock and are members of the small heat shock protein (HSP20) family. They act as molecular chaperones although they do not renature proteins and release them in the fashion of a true chaperone; instead they hold them in large soluble aggregates. Post-translational modifications decrease the ability to chaperone. These heterogeneous aggregates consist of 30-40 subunits; the alpha-A and alpha-B subunits have a 3:1 ratio, respectively. Two additional functions of alpha crystallins are an autokinase activity and participation in the intracellular architecture. The encoded protein has been identified as a moonlighting protein based on its ability to perform mechanistically distinct functions. Alpha-A and alpha-B gene products are differentially expressed; alpha-A is preferentially restricted to the lens and alpha-B is expressed widely in many tissues and organs. Elevated expression of alpha-B crystallin occurs in many neurological diseases; a missense mutation cosegregated in a family with a desmin-related myopathy. Alternative splicing results in multiple transcript variants. |
| 基因ID | 1410 |
| 基因名 | CRYAB |
| Swiss | P02511 |
| 别名 | CRYAB;CMD1II;CRYA2;CTPP2;CTRCT16;HEL-S-101;HSPB5;MFM2 |

产品验证



实验步骤

访问官网浏览详情: www.ablybio.cn