

Prion Protein Rabbit mAb

货号: **B30794**

产品信息

反应	Human,Mouse,Rat
宿主	Rabbit
克隆性	Monoclonal
预测反应	
应用	WB IHC IF/ICC FC
推荐浓度	WB: 1:500 - 1:2000 IHC: 1:50 - 1:200 IF/ICC: 1:50 - 1:200 FC: 1:20 - 1:50
理论分子量	8kDa/26kDa/27kDa
实测分子量	28kDa
形式	Liquid
保存条件	Store at -20°C. Avoid freeze / thaw cycles. Buffer: PBS with 0.75% BSA,50% glycerol,pH7.3.
偶联物	Unconjugated
阳性对照	HeLa
细胞定位	Cell membrane,Cytoplasm,GPI-anchor,Golgi apparatus,Lipid-anchor,Nucleus
纯化	Affinity purification

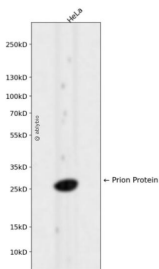
抗原信息

抗原信息	Recombinant fusion protein corresponding to Human Prion Protein.
序列	KKRPKPGGWNTGGSRYPGQGSPGGNRYPPQGGGGWGQPHGGGGWGQPHGGGGWGQPHGGGGWGQPHGGGGWGQGG GTHSQWNKPSKPTNMKHMAGAAAAGAVVGGGLGGYMLGSAMSRPIIHFGSDYEDRYRENMHRYPNQVYYRPMDEYS NQNNFVHDCVNITIKQHTVTTTTKGENFTETDVKMMERVVEQMCITQYERESQAYYQRGS

靶点信息

研究背景	The protein encoded by this gene is a membrane glycosylphosphatidylinositol-anchored glycoprotein that tends to aggregate into rod-like structures. The encoded protein contains a highly unstable region of five tandem octapeptide repeats. This gene is found on chromosome 20, approximately 20 kbp upstream of a gene which encodes a biochemically and structurally similar protein to the one encoded by this gene. Mutations in the repeat region as well as elsewhere in this gene have been associated with Creutzfeldt-Jakob disease, fatal familial insomnia, Gerstmann-Straussler disease, Huntington disease-like 1, and kuru. An overlapping open reading frame has been found for this gene that encodes a smaller, structurally unrelated protein, AltPrp. Alternative splicing results in multiple transcript variants.
基因ID	5621
基因名	PRNP
Swiss	P04156
别名	PRNP;ASCR;AltPrP;CD230;CJD;GSS;KURU;PRIP;PrP;PrP27-30;PrP33-35C;PrPc;p27-30

产品验证



Western blot analysis of Prion Protein expressed in HeLa using Prion Protein Rabbit mAb at 1:1000. Secondary antibody: HRP Goat Anti-Rabbit IgG (H+L) at 1:5000. Lysates/proteins: 30ug per lane. Blocking buffer: 5% non-fat dry milk in TBST. Detection: ECL Enhanced Kit. Exposure time: 120s.

实验步骤

访问官网浏览详情: www.ablybio.cn