

ALDH16A1 Rabbit mAb

货号: B30792

产品信息

| | |
|-------|---|
| 反应 | Human,Mouse,Rat |
| 宿主 | Rabbit |
| 克隆性 | Monoclonal |
| 预测反应 | |
| 应用 | WB IHC |
| 推荐浓度 | WB: 1:500 - 1:2000 IHC: 1:50 - 1:200 |
| 理论分子量 | 80kDa |
| 实测分子量 | 80kDa |
| 形式 | Liquid |
| 保存条件 | Store at -20°C. Avoid freeze / thaw cycles. Buffer: PBS with 0.75% BSA,50% glycerol,pH7.3. |
| 偶联物 | Unconjugated |
| 阳性对照 | HepG2,RD,K-562,Mouse large intestine,Mouse liver,Mouse kidney,Rat liver |
| 细胞定位 | |
| 纯化 | Affinity purification |

抗原信息

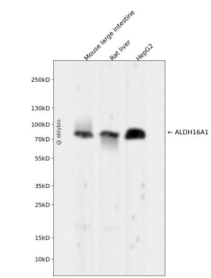
| | |
|------|--|
| 抗原信息 | Recombinant fusion protein corresponding to Human ALDH16A1. |
| 序列 | NLNYDTFGLAVPSTLPAGPEIGSPAPPYGLFVGGRFQAPGARSSRPIRDSSGNLHGYVAEGGAKDIRGAVEAAHQAFPG WAGQSPGARAALLWALAAALE |

靶点信息

| | |
|------|---|
| 研究背景 | This gene encodes a member of the aldehyde dehydrogenase superfamily. The family members act on aldehyde substrates and use nicotinamide adenine dinucleotide phosphate (NADP) as a cofactor. This gene is conserved in chimpanzee, dog, cow, mouse, rat, and zebrafish. The protein encoded by this gene interacts with maspardin, a protein that when truncated is responsible for Mast syndrome. Alternatively spliced transcript variants encoding different isoforms have been found for this gene. [provided by RefSeq, Apr 2010] |
|------|---|

| | |
|-------|----------|
| 基因ID | 126133 |
| 基因名 | ALDH16A1 |
| Swiss | Q8IZ83 |
| 别名 | |

产品验证



Western blot analysis of ALDH16A1 expressed in Mouse large intestine,Rat liver,HepG2 using ALDH16A1 Rabbit mAb at 1:1000. Secondary antibody: HRP Goat Anti-Rabbit IgG (H+L) at 1:5000. Lysates/proteins: 30ug per lane. Blocking buffer: 5% non-fat dry milk in TBST. Detection: ECL Enhanced Kit. Exposure time: 120s.

实验步骤

访问官网浏览详情: www.ablybio.cn