

SERPINC1 Rabbit mAb

货号: B30763

产品信息

反应	Human
宿主	Rabbit
克隆性	Monoclonal
预测反应	
应用	WB IF/ICC
推荐浓度	WB: 1:500 - 1:2000 IF/ICC: 1:50 - 1:200
理论分子量	52kDa
实测分子量	53kDa
形式	Liquid
保存条件	Store at -20°C. Avoid freeze / thaw cycles. Buffer: PBS with 0.75% BSA,50% glycerol,pH7.3.
偶联物	Unconjugated
阳性对照	Mouse plasma,Rat plasma
细胞定位	Secreted,extracellular space
纯化	Affinity purification

抗原信息

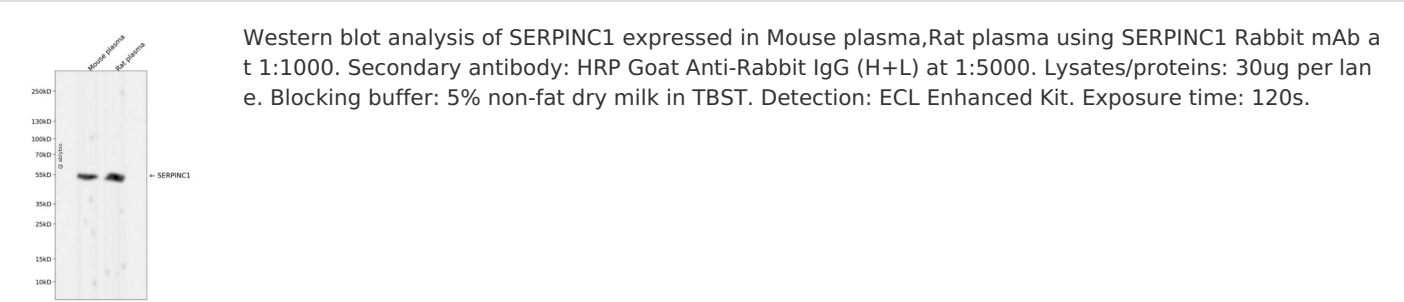
抗原信息	Recombinant fusion protein corresponding to Human SERPINC1 .
序列	HGSPVDICTAKPRDIPMNPNCIYRSPEKKATEDEGSEQKIPEATNRRVWELSKANSRFATTFYQHLADSKNDNDNIFLSPLS ISTAFAMTKLGACNDTLQQLMEVFKFDTISEKTSQIHFFFAKLNCRLYRKANKSSKLVSANRLFGDKSLTFNETYQDISEL VYGAKLQPLDFKENAEQSRAAINKWVSNKTEGRITDVIPSEAINELTVLVLVNTIYFKGLWKS

靶点信息

研究背景	The protein encoded by this gene is a plasma protease inhibitor and a member of the serpin superfamily. This protein inhibits thrombin as well as other activated serine proteases of the coagulation system, and i t regulates the blood coagulation cascade. The protein includes two functional domains: the heparin bindi ng-domain at the N-terminus of the mature protein, and the reactive site domain at the C-terminus. The i nhibitory activity is enhanced by the presence of heparin. More than 120 mutations have been identified f or this gene, many of which are known to cause antithrombin-III deficiency.
------	--

基因ID	462
基因名	SERPINC1
Swiss	P01008
别名	SERPINC1;AT3;AT3D;ATIII;THPH7

产品验证



实验步骤

访问官网浏览详情: www.ablybio.cn