

# Talin 2 Rabbit mAb

货号: B30733

产品信息

反应	Human,Mouse,Rat
宿主	Rabbit
克隆性	Monoclonal
预测反应	
应用	WB
推荐浓度	<b>WB:</b> 1:500 - 1:2000
理论分子量	270kDa
实测分子量	270kDa
形式	Liquid
保存条件	Store at -20°C. Avoid freeze / thaw cycles. Buffer: PBS with 0.75% BSA,50% glycerol,pH7.3.
偶联物	Unconjugated
阳性对照	HeLa,NIH/3T3,Mouse testis,Rat testis
细胞定位	actin cytoskeleton,cytoplasm,focal adhesion,plasma membrane
纯化	Affinity purification

抗原信息

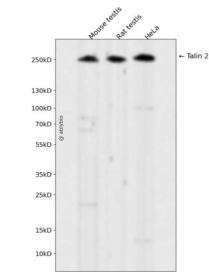
抗原信息	Recombinant fusion protein corresponding to Human Talin 2.
序列	VLQEWPLTTVKRWAAPKSF <del>TLDFGEYQ</del> ESYYSVQTTEGEQISQLIAGYIDIILKKKQSKDRFGLEGDEESTMLEESVSPKKSTILQQQFNRTGKAEHG <del>SV</del>

靶点信息

研究背景	This gene encodes a protein related to talin 1, a cytoskeletal protein that plays a significant role in the assembly of actin filaments and in spreading and migration of various cell types, including fibroblasts and osteoclasts. This protein has a different pattern of expression compared to talin 1 but, like talin 1, is thought to associate with unique transmembrane receptors to form novel linkages between extracellular matrices and the actin cytoskeleton. [provided by RefSeq, Jul 2008]
基因ID	83660

基因名	TLN2
Swiss	Q9Y4G6
别名	ILWEQ

产品验证



Western blot analysis of Talin 2 expressed in Mouse testis,Rat testis,HeLa using Talin 2 Rabbit mAb at 1 :1000. Secondary antibody: HRP Goat Anti-Rabbit IgG (H+L) at 1:5000. Lysates/proteins: 30ug per lane. Blocking buffer: 5% non-fat dry milk in TBST. Detection: ECL Enhanced Kit. Exposure time: 120s.

实验步骤

访问官网浏览详情: [www.ablybio.cn](http://www.ablybio.cn)