

Phospho-Met (c-Met) (Y1349) Rabbit mAb

货号: B30579

产品信息

反应	Human
宿主	Rabbit
克隆性	Monoclonal
预测反应	
应用	WB IHC IP
推荐浓度	WB: 1:500 - 1:2000 IHC: 1:50 - 1:200 IP: 1:20 - 1:50
理论分子量	85kDa/155kDa/157kDa
实测分子量	156kDa
形式	Liquid
保存条件	Store at -20°C. Avoid freeze / thaw cycles. Buffer: PBS with 0.75% BSA,50% glycerol,pH7.3.
偶联物	Unconjugated
阳性对照	Rat kidney
细胞定位	Membrane,Secreted,Single-pass type I membrane protein
纯化	Affinity purification

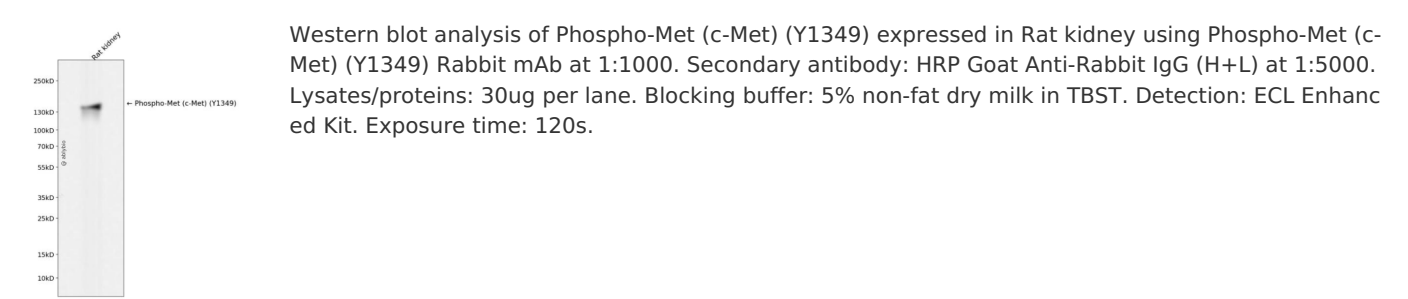
抗原信息

抗原信息	Recombinant fusion protein corresponding to Human Phospho-Met (c-Met) (Y1349).
序列	LGCRHFQSCSQCLSAPPFVQCGWCHDKCVRSEECLSGTWTQQICLPAIYKVFPNSAPLEGGTRLTICGWDFGFRNNKF DLKKTRVLLGNESCTLTLESTMNTLKCTVGPAMNKHFNMSIIISNGHGTTQYSTFSYVDPVITSISPKYGPMAGGTLLTLT GNYLNSGNSRHSISGGKTCTLKSVSNSILECYTPAQTISTEFAVKLKIDLANRETSIFSYPREDPIVYIEIHPTKSFISGGSTITGVG KNLNSVSVPRMVINVHEAGRNFVACQHRSNSEIICCTTPSLQQLNLQLPLKTKAFFMLDGILSKYFDLIYVHNPV

靶点信息

研究背景	This gene encodes a member of the receptor tyrosine kinase family of proteins and the product of the pro to-oncogene MET. The encoded preproprotein is proteolytically processed to generate alpha and beta sub units that are linked via disulfide bonds to form the mature receptor. Further processing of the beta subu nit results in the formation of the M10 peptide, which has been shown to reduce lung fibrosis. Binding of i ts ligand, hepatocyte growth factor, induces dimerization and activation of the receptor, which plays a rol e in cellular survival, embryogenesis, and cellular migration and invasion. Mutations in this gene are asso ciated with papillary renal cell carcinoma, hepatocellular carcinoma, and various head and neck cancers. Amplification and overexpression of this gene are also associated with multiple human cancers.
基因ID	4233
基因名	MET
Swiss	P08581
别名	MET;AUTS9;DFNB97;HGFR;RCCP2;c-Met

产品验证



实验步骤

访问官网浏览详情: www.ablybio.cn