

Phospho-PLK1 (T210) Rabbit mAb

货号: B30442

产品信息

反应	Human
宿主	Rabbit
克隆性	Monoclonal
预测反应	
应用	WB
推荐浓度	WB: 1:500 - 1:2000
理论分子量	68kDa
实测分子量	68kDa
形式	Liquid
保存条件	Store at -20°C. Avoid freeze / thaw cycles. Buffer: PBS with 0.75% BSA,50% glycerol,pH7.3.
偶联物	Unconjugated
阳性对照	HT-29
细胞定位	Chromosome,Cytoplasm,Midbody,Nucleus,centromere,centrosome,cytoskeleton,kinetochore,microtubule organizing center,spindle
纯化	Affinity purification

抗原信息

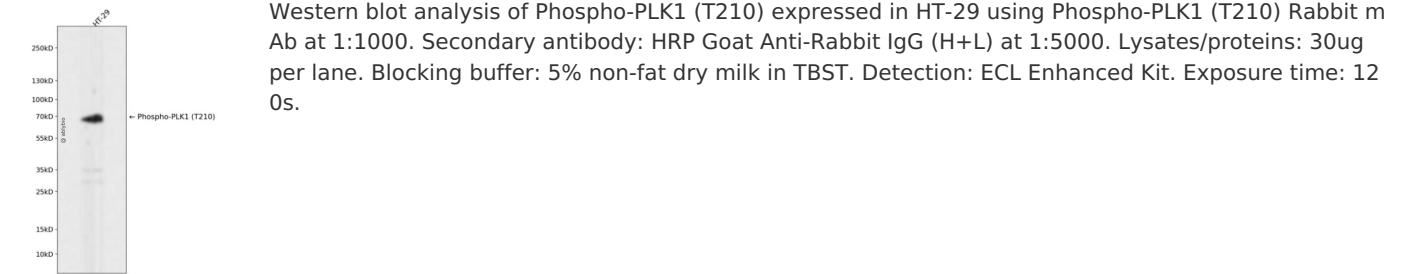
抗原信息	Recombinant fusion protein corresponding to Human Phospho-PLK1 (T210).
序列	KKTLC

靶点信息

研究背景	The Ser/Thr protein kinase encoded by this gene belongs to the CDC5/Polo subfamily. It is highly expressed during mitosis and elevated levels are found in many different types of cancer. Depletion of this protein in cancer cells dramatically inhibited cell proliferation and induced apoptosis; hence, it is a target for cancer therapy. [provided by RefSeq, Sep 2015]
基因ID	5347

基因名	PLK1
Swiss	P53350
别名	PLK; STPK13

产品验证



实验步骤

访问官网浏览详情: www.ablybio.cn