

CLPX Rabbit mAb

货号: B30389

产品信息

反应	Human,Mouse,Rat
宿主	Rabbit
克隆性	Monoclonal
预测反应	
应用	WB ICC
推荐浓度	WB: 1:500 - 1:2000 ICC: 1:50 - 1:200
理论分子量	
实测分子量	60kDa
形式	Liquid
保存条件	Store at -20°C. Avoid freeze / thaw cycles. Buffer: PBS with 0.75% BSA,50% glycerol,pH7.3.
偶联物	Unconjugated
阳性对照	Mouse liver,Rat live
细胞定位	cytosol,mitochondrial endopeptidase Clp complex,mitochondrial inner membrane,mitochondrial matrix,mitochondrial nucleoid,mitochondrion,nucleoplasm
纯化	Affinity purification

抗原信息

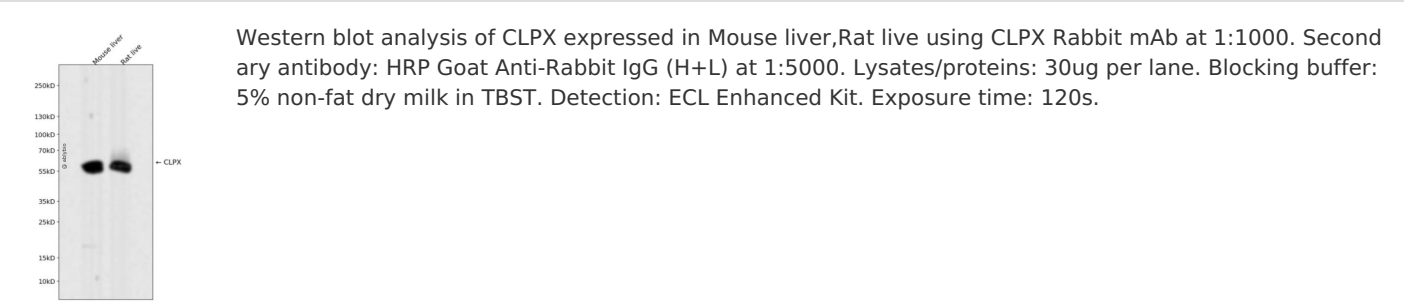
抗原信息	Recombinant fusion protein corresponding to Human CLPX.
序列	LPVVVPLHSLDEKTLVQILTEPRNAVIPQYQALFSMDKCELVNTEALKAIALALERKTGARGLRISIMEKLLLEPMFEVPSNDIVCVEVDKEVVEGKKEP

靶点信息

研究背景	The protein encoded by this gene is part of a protease found in mitochondria. This protease is ATP-dependent and targets specific proteins for degradation. The protease consists of two heptameric rings of the CLPP catalytic subunit sandwiched between two hexameric rings of the chaperone subunit encoded by this gene. Targeted proteins are unwound by this protein and then passed on to the CLPP subunit for degradation. Two transcript variants, one protein-coding and the other non-protein coding, have been found for this gene.
------	--

基因ID	10845
基因名	CLPX
Swiss	O76031
别名	CLPX

产品验证



实验步骤

访问官网浏览详情: www.ablybio.cn