

# Phospho-Raf1 (S621) Rabbit mAb

货号: B30365

产品信息

反应	Human,Mouse,Rat
宿主	Rabbit
克隆性	Monoclonal
预测反应	
应用	WB
推荐浓度	<b>WB:</b> 1:500 - 1:2000
理论分子量	74kDa
实测分子量	74kDa
形式	Liquid
保存条件	Store at -20°C. Avoid freeze / thaw cycles. Buffer: PBS with 0.75% BSA,50% glycerol,pH7.3.
偶联物	Unconjugated
阳性对照	C6,HeLa
细胞定位	Cell membrane,Cytoplasm,Mitochondrion,Nucleus
纯化	Affinity purification

抗原信息

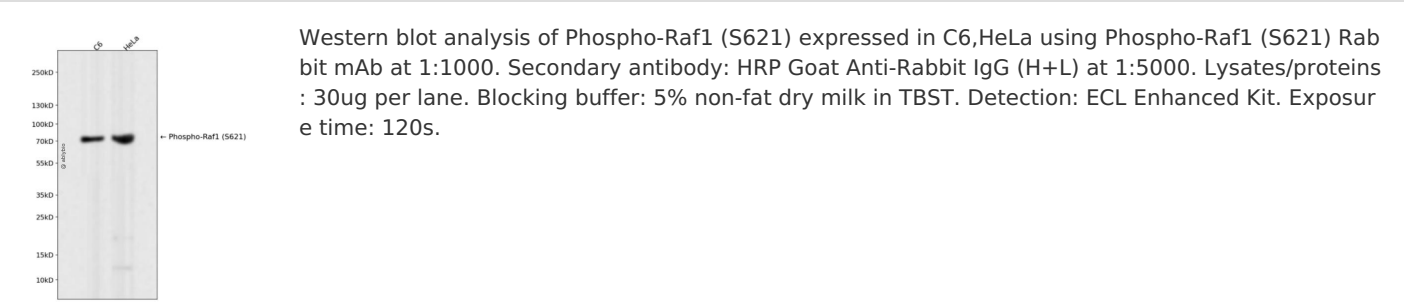
抗原信息	Recombinant fusion protein corresponding to Human Phospho-Raf1 (S621).
序列	SASEP

靶点信息

研究背景	<p>This gene is the cellular homolog of viral raf gene (v-raf). The encoded protein is a MAP kinase kinase kinase (MAP3K), which functions downstream of the Ras family of membrane associated GTPases to which it binds directly. Once activated, the cellular RAF1 protein can phosphorylate to activate the dual specificity protein kinases MEK1 and MEK2, which in turn phosphorylate to activate the serine/threonine specific protein kinases, ERK1 and ERK2. Activated ERKs are pleiotropic effectors of cell physiology and play an important role in the control of gene expression involved in the cell division cycle, apoptosis, cell differentiation and cell migration. Mutations in this gene are associated with Noonan syndrome 5 and LEOPARD syndrome 2. [provided by RefSeq, Jul 2008]</p>
------	--

基因ID	5894
基因名	RAF1
Swiss	P04049
别名	CMD1NN; CRAF; NS5; Raf-1; c-Raf

产品验证



实验步骤

访问官网浏览详情: [www.ablybio.cn](http://www.ablybio.cn)