

# Apg12 Rabbit mAb

货号: **B30242**

## 产品信息

反应	Human
宿主	Rabbit
克隆性	Monoclonal
预测反应	
应用	WB IHC ICC
推荐浓度	<b>WB:</b> 1:500 - 1:2000 <b>IHC:</b> 1:50 - 1:200 <b>ICC:</b> 1:50 - 1:200
理论分子量	22,55kDa
实测分子量	20,55kDa
形式	Liquid
保存条件	Store at -20°C. Avoid freeze / thaw cycles. Buffer: PBS with 0.75% BSA,50% glycerol,pH7.3.
偶联物	Unconjugated
阳性对照	PC-3,Mouse brain,Mouse stomach
细胞定位	Cytoplasm,Peripheral membrane protein,Preautophagosomal structure membrane
纯化	Affinity purification

## 抗原信息

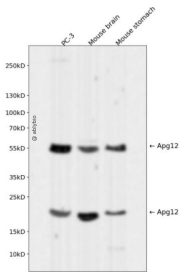
抗原信息	Recombinant fusion protein corresponding to Human Apg12.
序列	AVGDTPIMKTKKWAVERTRTIQGLIDFIKFLKLVASEQLFIYVNQSFAPSPDQEVGTLYECFGSDGKLVLYHCKSQAWG

## 靶点信息

研究背景	Autophagy is a process of bulk protein degradation in which cytoplasmic components, including organelles, are enclosed in double-membrane structures called autophagosomes and delivered to lysosomes or vacuoles for degradation. ATG12 is the human homolog of a yeast protein involved in autophagy (Mizushima et al., 1998 [PubMed 9852036]).[supplied by OMIM, Mar 2008]
基因ID	9140

基因名	ATG12
Swiss	O94817
别名	ATG12;APG12;APG12L;FBR93;HAPG12;Apg12

## 产品验证



Western blot analysis of Apg12 expressed in PC-3, Mouse brain, Mouse stomach using Apg12 Rabbit mAb at 1:1000. Secondary antibody: HRP Goat Anti-Rabbit IgG (H+L) at 1:5000. Lysates/proteins: 30ug per lane. Blocking buffer: 5% non-fat dry milk in TBST. Detection: ECL Enhanced Kit. Exposure time: 120s.

## 实验步骤

访问官网浏览详情: [www.ablybio.cn](http://www.ablybio.cn)