

PPP2R5D Rabbit mAb

货号: B30205

产品信息

反应	Human,Mouse,Rat
宿主	Rabbit
克隆性	Monoclonal
预测反应	
应用	WB IHC IF/ICC IP FC
推荐浓度	WB: 1:500 - 1:2000 IHC: 1:50 - 1:200 IF/ICC: 1:50 - 1:200 IP: 1:20 - 1:50 FC: 1:20 - 1:50
理论分子量	58kDa/66kDa/69kDa
实测分子量	60,65kDa
形式	Liquid
保存条件	Store at -20°C. Avoid freeze / thaw cycles. Buffer: PBS with 0.75% BSA,50% glycerol,pH7.3.
偶联物	Unconjugated
阳性对照	HT-29,293T,HeLa,Mouse heart,Mouse kidney,Rat kidney
细胞定位	Cytoplasm,Nucleus
纯化	Affinity purification

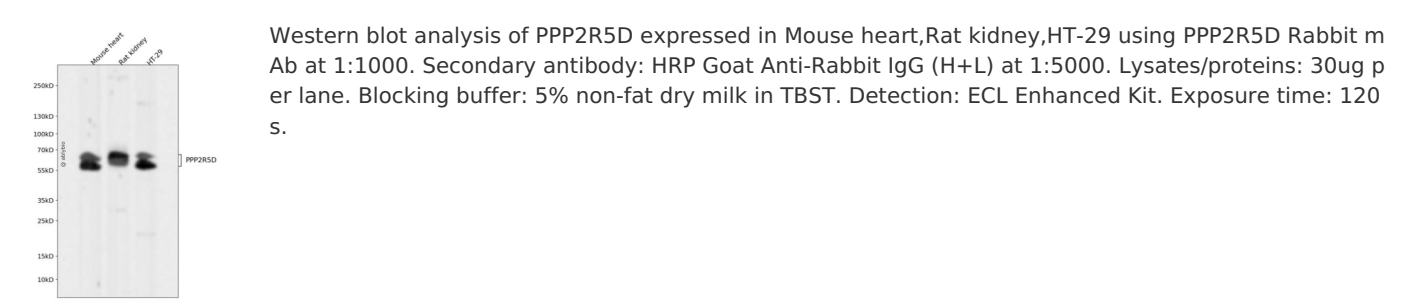
抗原信息

抗原信息	Recombinant fusion protein corresponding to Human PPP2R5D.
序列	LYRNSKSHWNKTIHGLIYNALKLFMEMNQKLFDDCTQQYKAEKQKGRFRMKEREEMWQKIEELARLNPQYPMFRAPPLP PVYSMETETPTAEDIQLLKRT

靶点信息

研究背景	The product of this gene belongs to the phosphatase 2A regulatory subunit B family. Protein phosphatase 2A is one of the four major Ser/Thr phosphatases, and it is implicated in the negative control of cell growth and division. It consists of a common heteromeric core enzyme, which is composed of a catalytic subunit and a constant regulatory subunit, that associates with a variety of regulatory subunits. The B regulatory subunit might modulate substrate selectivity and catalytic activity. This gene encodes a delta isoform of the regulatory subunit B56 subfamily. Alternatively spliced transcript variants encoding different isoforms have been identified.
基因ID	5528
基因名	PPP2R5D
Swiss	Q14738
别名	PPP2R5D;B56D;MRD35;B56delta

产品验证



实验步骤

访问官网浏览详情: www.ablybio.cn