

Cdc23/APC8 Rabbit mAb

货号: B30159

产品信息

反应	Human,Mouse,Rat
宿主	Rabbit
克隆性	Monoclonal
预测反应	
应用	WB IF/ICC
推荐浓度	WB: 1:500 - 1:2000 IF/ICC: 1:50 - 1:200
理论分子量	64kDa
实测分子量	64kDa
形式	Liquid
保存条件	Store at -20°C. Avoid freeze / thaw cycles. Buffer: PBS with 0.75% BSA,50% glycerol,pH7.3.
偶联物	Unconjugated
阳性对照	HeLa,SKOV3,Jurkat,Mouse lung,Mouse brain,Mouse spleen,Rat brain
细胞定位	cytoplasm,cytosol,nucleoplasm
纯化	Affinity purification

抗原信息

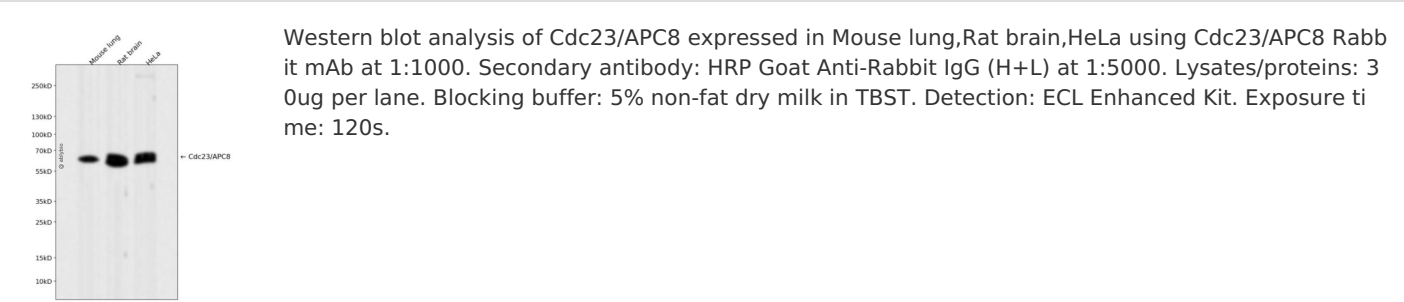
抗原信息	Recombinant fusion protein corresponding to Human Cdc23/APC8.
序列	YSCGEIVEHLEESTAFRYLAQYYFKCKLWDEASTCAQKCCAFNDTREEGKALLRQILQLRNQGETPTTEVPAPFFLPASLSA NNTPTRRVSPNLNLSVTP

靶点信息

研究背景	The protein encoded by this gene shares strong similarity with Saccharomyces cerevisiae Cdc23, a protein essential for cell cycle progression through the G2/M transition. This protein is a component of anaphase-promoting complex (APC), which is composed of eight protein subunits and highly conserved in eukaryotic cells. APC catalyzes the formation of cyclin B-ubiquitin conjugate that is responsible for the ubiquitin-mediated proteolysis of B-type cyclins. This protein and 3 other members of the APC complex contain the TPR (tetratricopeptide repeat), a protein domain important for protein-protein interaction. [provided by RefSeq, Jul 2008]
------	--

基因ID	8697
基因名	CDC23
Swiss	Q9UJX2
别名	ANAPC8; APC8; CUT23

产品验证



实验步骤

访问官网浏览详情: www.ablybio.cn