

# Furin Rabbit mAb

货号: B30114

产品信息

|       |  |
|-------|--|
| 反应    | Human,Mouse,Rat  |
| 宿主    | Rabbit   |
| 克隆性   | Monoclonal   |
| 预测反应  |  |
| 应用    | WB IHC IF/ICC  |
| 推荐浓度  | <b>WB:</b> 1:500 - 1:2000<br><b>IHC:</b> 1:50 - 1:200<br><b>IF/ICC:</b> 1:50 - 1:200           |
| 理论分子量 | 87kDa  |
| 实测分子量 | 87kDa  |
| 形式    | Liquid   |
| 保存条件  | Store at -20°C. Avoid freeze / thaw cycles.<br>Buffer: PBS with 0.75% BSA,50% glycerol,pH7.3.  |
| 偶联物   | Unconjugated   |
| 阳性对照  | HeLa,HT-29,A-549,Mouse brain   |
| 细胞定位  | Cell membrane,Golgi apparatus,Single-pass type I membrane protein,trans-Golgi network membrane |
| 纯化    | Affinity purification  |

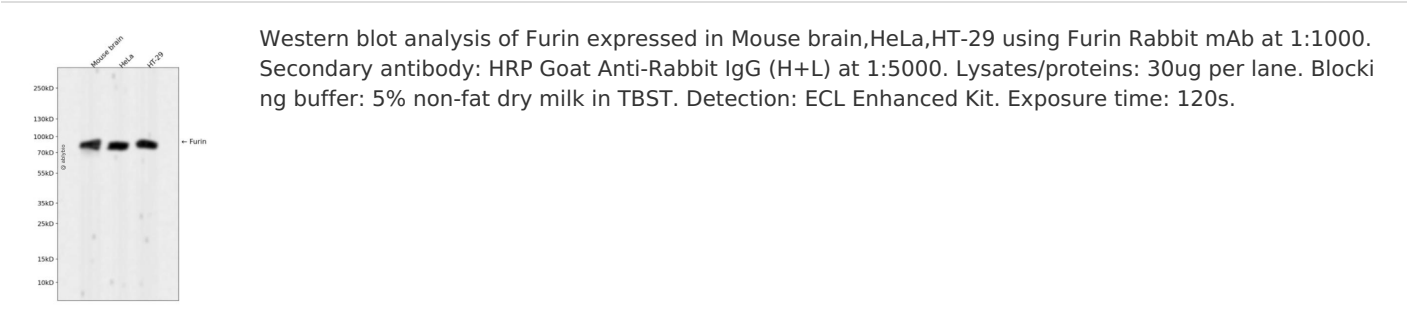
抗原信息

|      |   |
|------|---|
| 抗原信息 | Recombinant fusion protein corresponding to Human Furin.  |
| 序列   | GEVAAVANNGVCGVG VAYNARIGGV RMLDGEVTD AVEARSLGLNP NHIHIYSASWGPEDD GKTV DGPARLAEEA FFRGV SQGRGGLGSIFV WASGN GGREH |

靶点信息

|       |  |
|-------|--|
| 研究背景  | This gene encodes a member of the subtilisin-like proprotein convertase family, which includes proteases that process protein and peptide precursors trafficking through regulated or constitutive branches of the secretory pathway. It encodes a type 1 membrane bound protease that is expressed in many tissues, including neuroendocrine, liver, gut, and brain. The encoded protein undergoes an initial autocatalytic processing event in the ER and then sorts to the trans-Golgi network through endosomes where a second autocatalytic event takes place and the catalytic activity is acquired. The product of this gene is one of the seven basic amino acid-specific members which cleave their substrates at single or paired basic residues. Some of its substrates include parathyroid hormone, transforming growth factor beta 1 precursor, proalbumin, pro-beta-secretase, membrane type-1 matrix metalloproteinase, beta subunit of pro-nerve growth factor and von Willebrand factor. It is also thought to be one of the proteases responsible for the activation of HIV envelope glycoproteins gp160 and gp140 and may play a role in tumor progression. This gene is located in close proximity to family member proprotein convertase subtilisin/kexin type 6 and upstream of the FES oncogene. Alternative splicing results in multiple transcript variants. [provided by RefSeq, Jan 2014] |
| 基因ID  | 5045   |
| 基因名   | FURIN  |
| Swiss | P09958   |
| 别名    | FUR; PACE; PCSK3; SPC1   |

产品验证



实验步骤

访问官网浏览详情: [www.ablybio.cn](http://www.ablybio.cn)