

Claudin 11 Rabbit mAb

货号: B30072

产品信息

反应	Human,Mouse,Rat
宿主	Rabbit
克隆性	Monoclonal
预测反应	
应用	WB FC
推荐浓度	WB: 1:500 - 1:2000 FC: 1:20 - 1:50
理论分子量	21kDa
实测分子量	22kDa
形式	Liquid
保存条件	Store at -20°C. Avoid freeze / thaw cycles. Buffer: PBS with 0.75% BSA,50% glycerol,pH7.3.
偶联物	Unconjugated
阳性对照	U-87MG,HepG2,SH-SY5Y,Mouse placenta
细胞定位	Cell junction,Cell membrane,Multi-pass membrane protein,tight junction
纯化	Affinity purification

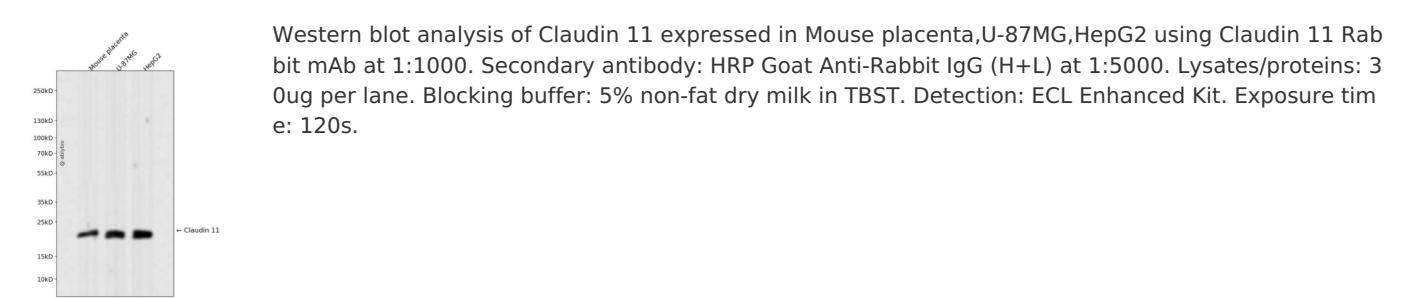
抗原信息

抗原信息	Recombinant fusion protein corresponding to Human Claudin 11.
序列	MVATCLQVVGFTVSFVGWIGVIVTTSTNDWVVTCTGYIPTCRKLDLGSKGLWADCVMATGLYHCKPLVDILILPGYVQAC RALMIAASVLGLPAILLLL

靶点信息

研究背景	This gene encodes a member of the claudin family. Claudins are integral membrane proteins and components of tight junction strands. Tight junction strands serve as a physical barrier to prevent solutes and water from passing freely through the paracellular space between epithelial or endothelial cell sheets, and also play critical roles in maintaining cell polarity and signal transductions. The protein encoded by this gene is a major component of central nervous system (CNS) myelin and plays an important role in regulating proliferation and migration of oligodendrocytes. Mouse studies showed that the gene deficiency results in deafness and loss of the Sertoli cell epithelial phenotype in the testis. This protein is a tight junction protein at the human blood-testis barrier (BTB), and the BTB disruption is related to a dysfunction of this gene. Alternatively spliced transcript variants encoding different isoforms have been identified.
基因ID	5010
基因名	CLDN11
Swiss	O75508
别名	CLDN11;OSP;OTM

产品验证



实验步骤

访问官网浏览详情: www.ablybio.cn