

PAR6 Rabbit mAb

货号: B30068

产品信息

反应	Human,Mouse,Rat
宿主	Rabbit
克隆性	Monoclonal
预测反应	
应用	WB IP
推荐浓度	WB: 1:500 - 1:2000 IP: 1:20 - 1:50
理论分子量	37kDa
实测分子量	37kDa
形式	Liquid
保存条件	Store at -20°C. Avoid freeze / thaw cycles. Buffer: PBS with 0.75% BSA,50% glycerol,pH7.3.
偶联物	Unconjugated
阳性对照	SW620,HT-29,Jurkat,U-251MG,Raji,Mouse testis
细胞定位	Cell junction,Cell membrane,Cell projection,Cytoplasm,ruffle,tight junction
纯化	Affinity purification

抗原信息

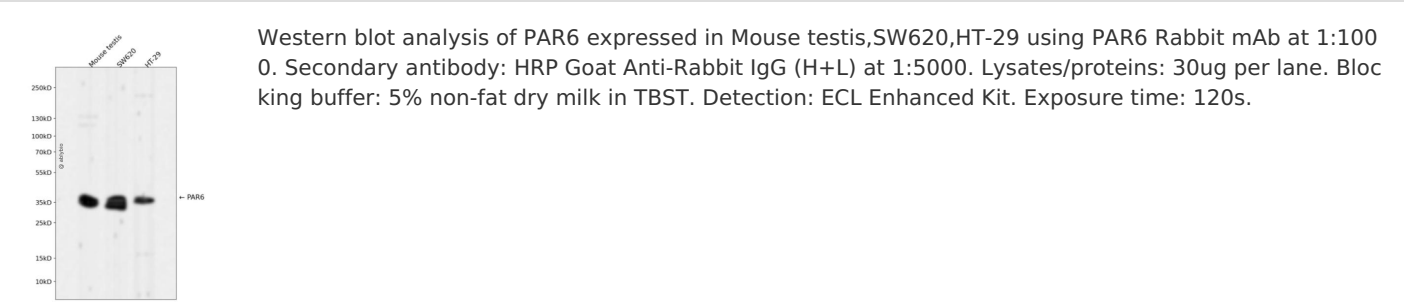
抗原信息	Recombinant fusion protein corresponding to Human PAR6.
序列	MARPQRTPARSPDSIVEVKSKFDAEFRRFALPRASVSGFQEFsRLLRAVHQIPGLDVLLGYTDAHGDLLPLTNDDSLHRALASGPPPLRLLVQKRAEADS

靶点信息

研究背景	This gene is a member of the PAR6 family and encodes a protein with a PSD95/Discs-large/ZO1 (PDZ) domain and a semi-Cdc42/Rac interactive binding (CRIB) domain. This cell membrane protein is involved in asymmetrical cell division and cell polarization processes as a member of a multi-protein complex. The protein also has a role in the epithelial-to-mesenchymal transition (EMT) that characterizes the invasive phenotype associated with metastatic carcinomas. Alternate transcriptional splice variants, encoding different isoforms, have been characterized.
------	---

基因ID	50855
基因名	PARD6A
Swiss	Q9NPB6
别名	PARD6A;PAR-6A;PAR6;PAR6C;PAR6alpha;TAX40;TIP-40

产品验证



实验步骤

访问官网浏览详情: www.ablybio.cn