

Cyclophilin B Rabbit mAb

货号: B30021

产品信息

反应	Human,Mouse,Rat
宿主	Rabbit
克隆性	Monoclonal
预测反应	
应用	WB
推荐浓度	WB: 1:500 - 1:2000
理论分子量	18kDa
实测分子量	18kDa
形式	Liquid
保存条件	Store at -20°C. Avoid freeze / thaw cycles. Buffer: PBS with 0.75% BSA,50% glycerol,pH7.3.
偶联物	Unconjugated
阳性对照	HeLa,HT-29,HepG2,Mouse liver,Mouse kidney,Mouse pancreas,Rat lung,Rat liver,Rat spleen
细胞定位	Endoplasmic reticulum lumen,Melanosome
纯化	Affinity purification

抗原信息

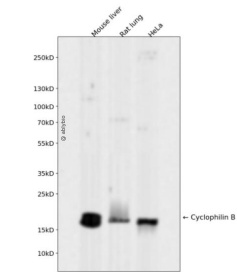
抗原信息	Recombinant fusion protein corresponding to Human Cyclophilin B .
序列	FMIQGGDFTRGDGTGGKSIYGERFPDENFKLKHYPGWVSMANAGKDTNGSQFFITTVKTAWLDGKHVVFGKVLEGME VVRKVESTKTDSRDKPLKDVIIA

靶点信息

研究背景	The protein encoded by this gene is a cyclosporine-binding protein and is mainly located within the endop lasmic reticulum. It is associated with the secretory pathway and released in biological fluids. This protein can bind to cells derived from T- and B-lymphocytes, and may regulate cyclosporine A-mediated immunos uppression. Variants have been identified in this protein that give rise to recessive forms of osteogenesis imperfecta. [provided by RefSeq, Oct 2009]
基因ID	5479

基因名	PPIB
Swiss	P23284
别名	CYP-S1; CYPB; HEL-S-39; OI9; SCYLP

产品验证



Western blot analysis of Cyclophilin B expressed in Mouse liver,Rat lung,HeLa using Cyclophilin B Rabbit mAb at 1:1000. Secondary antibody: HRP Goat Anti-Rabbit IgG (H+L) at 1:5000. Lysates/proteins: 30ug per lane. Blocking buffer: 5% non-fat dry milk in TBST. Detection: ECL Enhanced Kit. Exposure time: 120s.

实验步骤

访问官网浏览详情: www.ablybio.cn