

# DIAPH1 Rabbit mAb

货号: B29904

产品信息

反应	Human,Mouse,Rat
宿主	Rabbit
克隆性	Monoclonal
预测反应	
应用	WB IHC IF/ICC
推荐浓度	<b>WB:</b> 1:500 - 1:2000 <b>IHC:</b> 1:50 - 1:200 <b>IF/ICC:</b> 1:50 - 1:200
理论分子量	138kDa/140kDa/141kDa
实测分子量	155kDa
形式	Liquid
保存条件	Store at -20°C. Avoid freeze / thaw cycles. Buffer: PBS with 0.75% BSA,50% glycerol,pH7.3.
偶联物	Unconjugated
阳性对照	293T
细胞定位	Cell membrane,Cell projection,Cytoplasm,cytoskeleton,ruffle membrane
纯化	Affinity purification

抗原信息

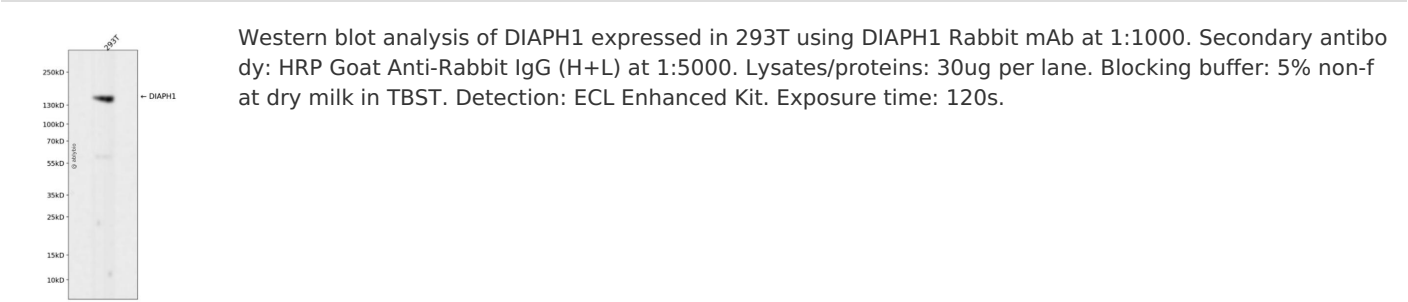
抗原信息	Recombinant fusion protein corresponding to Human DIAPH1.
序列	TEEKMRRAKLAKKEAEKERLEKQKREQLIDMNAEGDETGVMDSLLEALQSGAAFRRKRGPQRQANRKAGCAVTSLLASELTKDDAMAAVPAKVSKNSETFPTILEEAKELVGRAS

靶点信息

研究背景	This gene is a homolog of the Drosophila diaphanous gene, and has been linked to autosomal dominant, fully penetrant, nonsyndromic sensorineural progressive low-frequency hearing loss. Actin polymerization involves proteins known to interact with diaphanous protein in Drosophila and mouse. It has therefore been speculated that this gene may have a role in the regulation of actin polymerization in hair cells of the inner ear. Alternatively spliced transcript variants encoding distinct isoforms have been found for this gene.
------	--

基因ID	1729
基因名	DIAPH1
Swiss	O60610
别名	DIAPH1;DFNA1;DIA1;DRF1;LFHL1;SCBMS;hDIA1

产品验证



实验步骤

访问官网浏览详情: [www.ablybio.cn](http://www.ablybio.cn)