

HLTF Rabbit mAb

货号: B29822

产品信息

反应	Human,Rat
宿主	Rabbit
克隆性	Monoclonal
预测反应	
应用	WB IHC IF/ICC
推荐浓度	WB: 1:500 - 1:2000 IHC: 1:50 - 1:200 IF/ICC: 1:50 - 1:200
理论分子量	120kDa
实测分子量	120kDa
形式	Liquid
保存条件	Store at -20°C. Avoid freeze / thaw cycles. Buffer: PBS with 0.75% BSA,50% glycerol,pH7.3.
偶联物	Unconjugated
阳性对照	HeLa,293T,HepG2,Mouse lung,Mouse heart,Rat lung
细胞定位	Cytoplasm,Nucleus,nucleolus,nucleoplasm
纯化	Affinity purification

抗原信息

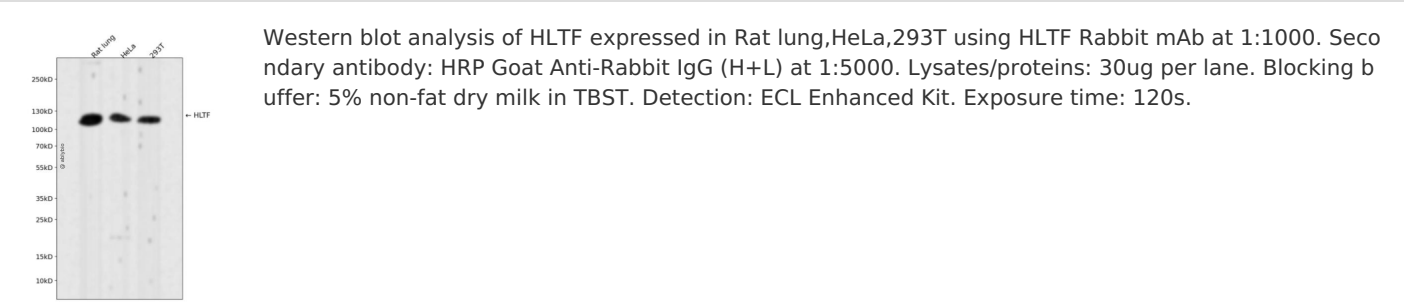
抗原信息	Recombinant fusion protein corresponding to Human HLTF.
序列	TEAGSPTIMLLSLKAGGVGLNLSAASRVFLMDPAWNPAEDQCFDRCHRLGQKQEVIITKFIVKDSVEENMLKIQNKKREL AAGAFGTTKPNADEMKQAKINEIRTLIDL

靶点信息

研究背景	This gene encodes a member of the SWI/SNF family. Members of this family have helicase and ATPase activities and are thought to regulate transcription of certain genes by altering the chromatin structure around those genes. The encoded protein contains a RING finger DNA binding motif. Two transcript variants encoding the same protein have been found for this gene. However, use of an alternative translation start site produces an isoform that is truncated at the N-terminus compared to the full-length protein. [provided by RefSeq, Jul 2008]
------	--

基因ID	6596
基因名	HLTF
Swiss	Q14527
别名	HIP116; HIP116A; HLTF1; RNF80; SMARCA3; SNF2L3; ZBU1

产品验证



实验步骤

访问官网浏览详情: www.ablybio.cn