

RPL13 Rabbit mAb

货号: B29775

产品信息

反应	Human,Mouse
宿主	Rabbit
克隆性	Monoclonal
预测反应	
应用	WB IHC IF/ICC
推荐浓度	WB: 1:500 - 1:2000 IHC: 1:50 - 1:200 IF/ICC: 1:50 - 1:200
理论分子量	26kDa
实测分子量	26kDa
形式	Liquid
保存条件	Store at -20°C. Avoid freeze / thaw cycles. Buffer: PBS with 0.75% BSA,50% glycerol,pH7.3.
偶联物	Unconjugated
阳性对照	Mouse spleen,Mouse kidney,Rat liver
细胞定位	cytoplasm,cytosol,cytosolic ribosome,endoplasmic reticulum,nucleolus,nucleus
纯化	Affinity purification

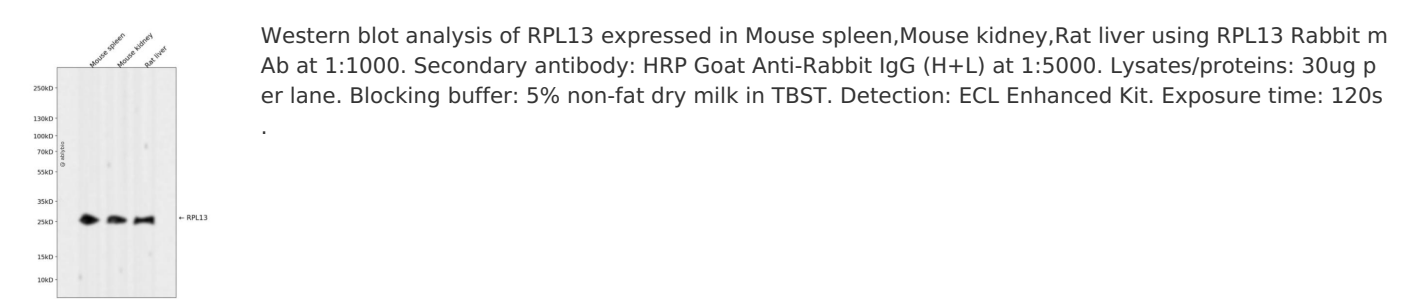
抗原信息

抗原信息	Recombinant fusion protein corresponding to Human RPL13.
序列	MAPSRNGMVLKPHFKDWQRRVATWFNQPARKIRRRKARQAKARRIAPRPASGPPIRPVRCPTVRYHTKVRAGRGFSLEE LRVAGIHKKVARTIGISVDP

靶点信息

研究背景	Ribosomes, the organelles that catalyze protein synthesis, consist of a small 40S subunit and a large 60S subunit. Together these subunits are composed of 4 RNA species and approximately 80 structurally distinct proteins. This gene encodes a ribosomal protein that is a component of the 60S subunit. The protein belongs to the L13E family of ribosomal proteins. It is located in the cytoplasm. This gene is expressed at significantly higher levels in benign breast lesions than in breast carcinomas. Alternatively spliced transcript variants encoding distinct isoforms have been found for this gene. As is typical for genes encoding ribosomal proteins, there are multiple processed pseudogenes of this gene dispersed through the genome.
基因ID	6137
基因名	RPL13
Swiss	P26373
别名	RPL13; BBC1; D16S444E; D16S44E; L13; ribosomal protein L13

产品验证



实验步骤

访问官网浏览详情: www.ablybio.cn