

# ABCE1 Rabbit mAb

货号: B29774

产品信息

反应	Human,Mouse,Rat
宿主	Rabbit
克隆性	Monoclonal
预测反应	
应用	WB IHC IF/ICC IP FC
推荐浓度	<b>WB:</b> 1:500 - 1:2000 <b>IHC:</b> 1:50 - 1:200 <b>IF/ICC:</b> 1:50 - 1:200 <b>IP:</b> 1:20 - 1:50 <b>FC:</b> 1:20 - 1:50
理论分子量	67kDa
实测分子量	67kDa
形式	Liquid
保存条件	Store at -20°C. Avoid freeze / thaw cycles. Buffer: PBS with 0.75% BSA,50% glycerol,pH7.3.
偶联物	Unconjugated
阳性对照	HeLa,HT-29,K-562,Mouse liver,Mouse spleen,Mouse pancreas
细胞定位	Cytoplasm,Mitochondrion
纯化	Affinity purification

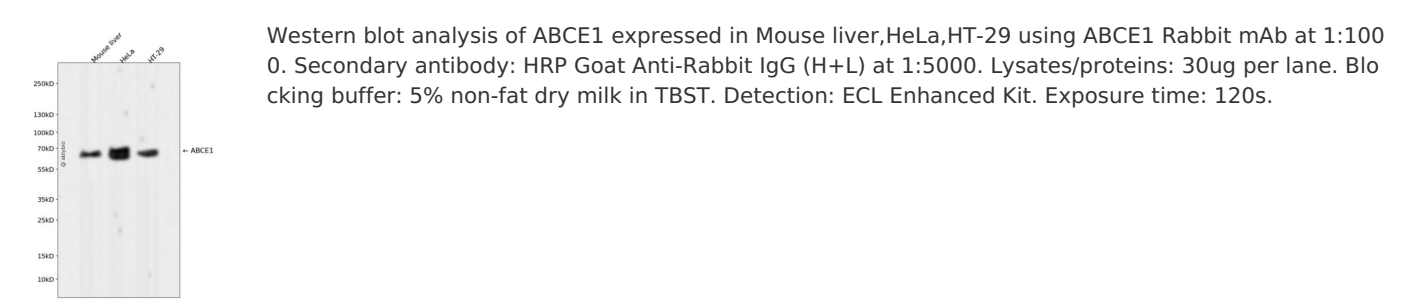
抗原信息

抗原信息	Recombinant fusion protein corresponding to Human ABCE1.
序列	AARVVKR FILHAKKTAFVVEHDFIMATYLADRVIVFDGVP SKNTVANSPQTLLAGMNF LSQL EITFRRDPNNYRPRINKLNS IKDVEQKKSGNYFFLDD

靶点信息

研究背景	The protein encoded by this gene is a member of the superfamily of ATP-binding cassette (ABC) transporters. ABC proteins transport various molecules across extra- and intra-cellular membranes. ABC genes are divided into seven distinct subfamilies (ABC1, MDR/TAP, MRP, ALD, OABP, GCN20, White). This protein is a member of the OABP subfamily. Alternatively referred to as the RNase L inhibitor, this protein functions to block the activity of ribonuclease L. Activation of ribonuclease L leads to inhibition of protein synthesis in the 2-5A/RNase L system, the central pathway for viral interferon action. Two transcript variants encoding the same protein have been found for this gene. [provided by RefSeq, Jul 2008]
基因ID	6059
基因名	ABCE1
Swiss	P61221
别名	ABC38; OABP; RLI; RLI1; RNASEL1; RNASELI; RNS4I

产品验证



实验步骤

访问官网浏览详情: [www.ablybio.cn](http://www.ablybio.cn)