

# GTPBP4 Rabbit mAb

货号: B29757

产品信息

反应	Human
宿主	Rabbit
克隆性	Monoclonal
预测反应	
应用	WB IHC IP FC
推荐浓度	<b>WB:</b> 1:500 - 1:2000 <b>IHC:</b> 1:50 - 1:200 <b>IP:</b> 1:20 - 1:50 <b>FC:</b> 1:20 - 1:50
理论分子量	60kDa/68kDa/73kDa
实测分子量	80kDa
形式	Liquid
保存条件	Store at -20°C. Avoid freeze / thaw cycles. Buffer: PBS with 0.75% BSA,50% glycerol,pH7.3.
偶联物	Unconjugated
阳性对照	293T,HeLa,Jurkat,MCF7,HT-1080,K-562
细胞定位	Nucleus,nucleolus
纯化	Affinity purification

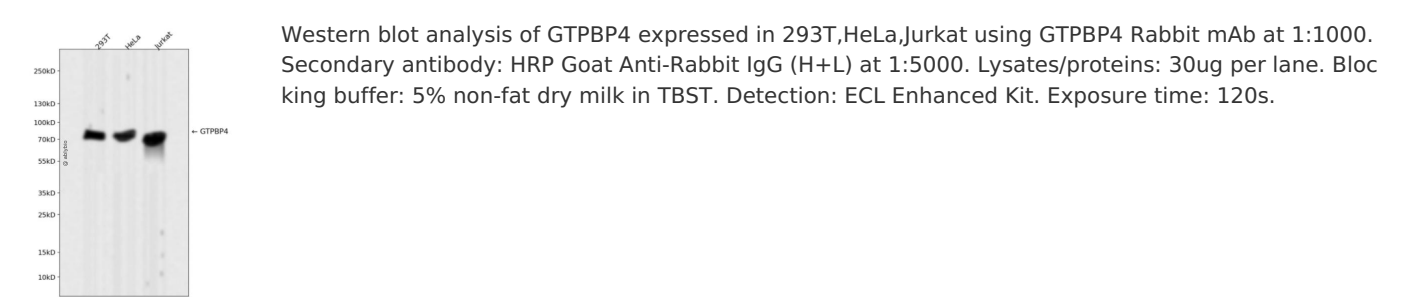
抗原信息

抗原信息	Recombinant fusion protein corresponding to Human GTPBP4.
序列	RKRMETEESRKKRERDLEMGDDYILDQLQKYWDLMLNLSEKHDKIPEIWEGHNIADYIDPAIMKKLEELEKEEELRTAAGEYDSVSESEDEEMLEIRQLAKQIREKKLKILESKEKNTQGPRMPRTAKKVQRTVLEKEMRSLGVDMDDKDDAHYAVQARRRSITRKRKREDSAPPSSVARSGSRTPRDVSGLRDVKMKVKKAKTMMKNAQKKMNRLGKKGEADRHVFDMPKHLLSGKRKAGKKDDR

靶点信息

研究背景	GTP-binding proteins are GTPases and function as molecular switches that can flip between two states: active, when GTP is bound, and inactive, when GDP is bound. 'Active' in this context usually means that the molecule acts as a signal to trigger other events in the cell. When an extracellular ligand binds to a G-protein-linked receptor, the receptor changes its conformation and switches on the trimeric G proteins that associate with it by causing them to eject their GDP and replace it with GTP. The switch is turned off when the G protein hydrolyzes its own bound GTP, converting it back to GDP. But before that occurs, the active protein has an opportunity to diffuse away from the receptor and deliver its message for a prolonged period to its downstream target.
基因ID	23560
基因名	GTPBP4
Swiss	Q9BZE4
别名	GTPBP4;CRFG;NGB;NOG1

产品验证



实验步骤

访问官网浏览详情: [www.ablybio.cn](http://www.ablybio.cn)