

CDC42EP1 Rabbit mAb

货号: B29756

产品信息

反应	Human
宿主	Rabbit
克隆性	Monoclonal
预测反应	
应用	WB
推荐浓度	WB: 1:500 - 1:2000
理论分子量	60kDa
实测分子量	60kDa
形式	Liquid
保存条件	Store at -20°C. Avoid freeze / thaw cycles. Buffer: PBS with 0.75% BSA,50% glycerol,pH7.3.
偶联物	Unconjugated
阳性对照	HeLa,HT-29,HepG2
细胞定位	cytoplasm,cytoskeleton,cytosol,focal adhesion,plasma membrane
纯化	Affinity purification

抗原信息

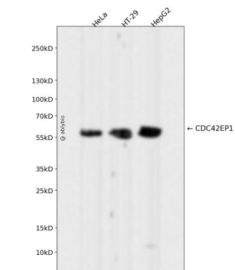
抗原信息	Recombinant fusion protein corresponding to Human CDC42EP1.
序列	AGLGPVAEVKSSPVGGGPRGPAGPALGRHWGAGWDGGHHYPEDARQERVEVLPQARASWESLDEEWRA PQAGSR TPVPSTVQANTFEFADAEEDDEVKV

靶点信息

研究背景	CDC42 is a member of the Rho GTPase family that regulates multiple cellular activities, including actin polymerization. The protein encoded by this gene is a CDC42 binding protein that mediates actin cytoskeleton reorganization at the plasma membrane. This protein is secreted and is primarily found in bone marrow. [provided by RefSeq, Jul 2008]
基因ID	11135

基因名	CDC42EP1
Swiss	Q00587
别名	BORG5; CEP1; MSE55

产品验证



Western blot analysis of CDC42EP1 expressed in HeLa,HT-29,HepG2 using CDC42EP1 Rabbit mAb at 1:1000. Secondary antibody: HRP Goat Anti-Rabbit IgG (H+L) at 1:5000. Lysates/proteins: 30ug per lane. Blocking buffer: 5% non-fat dry milk in TBST. Detection: ECL Enhanced Kit. Exposure time: 120s.

实验步骤

访问官网浏览详情: www.ablybio.cn