

ALDH1A1 Rabbit mAb

货号: B29754

产品信息

| | |
|-------|--|
| 反应 | Human,Mouse,Rat |
| 宿主 | Rabbit |
| 克隆性 | Monoclonal |
| 预测反应 | |
| 应用 | WB IHC IF/ICC FC IP |
| 推荐浓度 | WB: 1:500 - 1:2000 IHC: 1:50 - 1:200 IF/ICC: 1:50 - 1:200 FC: 1:20 - 1:50 IP: 1:20 - 1:50 |
| 理论分子量 | 54kDa |
| 实测分子量 | 55kDa |
| 形式 | Liquid |
| 保存条件 | Store at -20°C. Avoid freeze / thaw cycles. Buffer: PBS with 0.75% BSA,50% glycerol,pH7.3. |
| 偶联物 | Unconjugated |
| 阳性对照 | HepG2,A-549,K-562,Mouse lung,Mouse liver,Mouse testis,Rat lung,Rat kidney |
| 细胞定位 | Cytoplasm |
| 纯化 | Affinity purification |

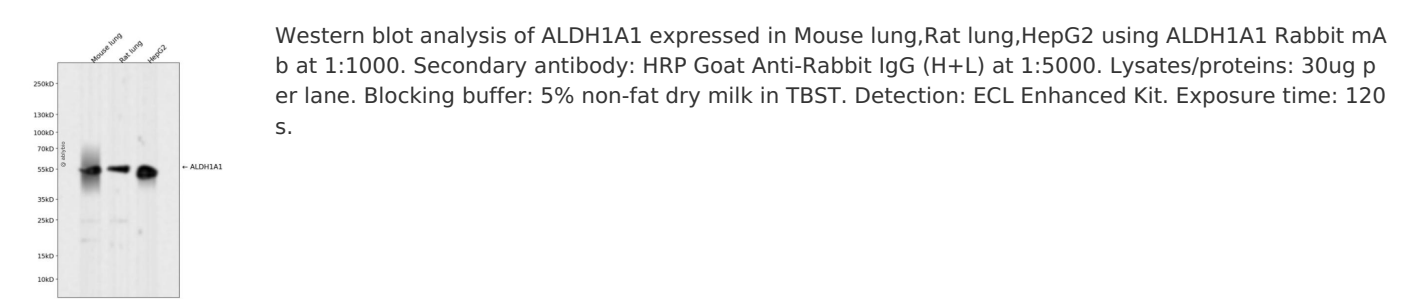
抗原信息

| | |
|------|--|
| 抗原信息 | Recombinant fusion protein corresponding to Human ALDH1A1. |
| 序列 | VGKLIKEAAGKSNLKRVTLLEGGKSPCIVLADADLDNAVEFAHHGVFYHQGCCIAASRIFVEESIYDEFVRRSVERAKKYILGNPLTPGVTQGPQIDKEQ |

靶点信息

| | |
|-------|---|
| 研究背景 | The protein encoded by this gene belongs to the aldehyde dehydrogenase family. Aldehyde dehydrogenase is the next enzyme after alcohol dehydrogenase in the major pathway of alcohol metabolism. There are two major aldehyde dehydrogenase isozymes in the liver, cytosolic and mitochondrial, which are encoded by distinct genes, and can be distinguished by their electrophoretic mobility, kinetic properties, and subcellular localization. This gene encodes the cytosolic isozyme. Studies in mice show that through its role in retinol metabolism, this gene may also be involved in the regulation of the metabolic responses to high-fat diet. |
| 基因ID | 216 |
| 基因名 | ALDH1A1 |
| Swiss | P00352 |
| 别名 | ALDH1A1;ALDC;ALDH-E1;ALDH1;ALDH11;HEL-9;HEL-S-53e;HEL12;PUMB1;RALDH1 |

产品验证



实验步骤

访问官网浏览详情: www.ablybio.cn