

EBP1 / PA2G4 Rabbit mAb

货号: B29722

产品信息

反应	Human,Mouse,Rat
宿主	Rabbit
克隆性	Monoclonal
预测反应	
应用	WB IHC IF/ICC IP FC
推荐浓度	WB: 1:500 - 1:2000 IHC: 1:50 - 1:200 IF/ICC: 1:50 - 1:200 IP: 1:20 - 1:50 FC: 1:20 - 1:50
理论分子量	38kDa/43kDa
实测分子量	48kDa
形式	Liquid
保存条件	Store at -20°C. Avoid freeze / thaw cycles. Buffer: PBS with 0.75% BSA,50% glycerol,pH7.3.
偶联物	Unconjugated
阳性对照	Mouse liver,BxPC-3,HeLa,PC-12,NIH/3T3,K-562,22Rv1,HT-29
细胞定位	Cytoplasm,Nucleus,nucleolus
纯化	Affinity purification

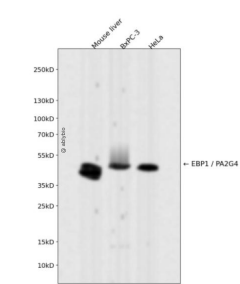
抗原信息

抗原信息	Recombinant fusion protein corresponding to Human EBP1 / PA2G4.
序列	MSGEDEQQEQTIAEDLVVTKYKMGGDIANRVLRSLVEASSGSVLSLCEKGDAMIMEETGKIFKKEKEMKKGIAFPTSIS VNNCVCHFSPKSDQDYILKEGDLVKIDLGVHVDGFIANVAHTFVVDVAQGTQVTGRKADVIKAAHLCAEAALRLVKPGN QNTQVTEAWNKVAHSFNCTPIEGMLSHQLKQHVIDGEKTIIQNPTDQKKDHEKAEFEVHEVYAVDVLVSSGEGKAKDA GQRTTIYKRDPSKQYGLKMKTSRAFFSEVERRFDAMPFTLRAFEDEKKARMGVVECAKHELLQPFNVLYEKEGEFVAQFK FTVLLMPNGPMRITSGPFEPDLYKSEMEVQDAELKALLQSSASRKTQKKKKKKASKTAENATSGETLEENEAGD

靶点信息

研究背景	This gene encodes an RNA-binding protein that is involved in growth regulation. This protein is present in pre-ribosomal ribonucleoprotein complexes and may be involved in ribosome assembly and the regulation of intermediate and late steps of rRNA processing. This protein can interact with the cytoplasmic domain of the ErbB3 receptor and may contribute to transducing growth regulatory signals. This protein is also a transcriptional co-repressor of androgen receptor-regulated genes and other cell cycle regulatory genes through its interactions with histone deacetylases. This protein has been implicated in growth inhibition and the induction of differentiation of human cancer cells. Six pseudogenes, located on chromosomes 3, 6, 9, 18, 20 and X, have been identified.
基因ID	5036
基因名	PA2G4
Swiss	Q9UQ80
别名	PA2G4;EBP1;HG4-1;p38-2G4

产品验证



Western blot analysis of EBP1 / PA2G4 expressed in Mouse liver,BxPC-3,HeLa using EBP1 / PA2G4 Rabbit mAb at 1:1000. Secondary antibody: HRP Goat Anti-Rabbit IgG (H+L) at 1:5000. Lysates/proteins: 30ug per lane. Blocking buffer: 5% non-fat dry milk in TBST. Detection: ECL Enhanced Kit. Exposure time: 120s.

实验步骤

访问官网浏览详情: www.ablybio.cn