

Cathepsin H Rabbit mAb

货号: B29579

产品信息

反应	Human
宿主	Rabbit
克隆性	Monoclonal
预测反应	
应用	WB IHC IF/ICC
推荐浓度	WB: 1:500 - 1:2000 IHC: 1:50 - 1:200 IF/ICC: 1:50 - 1:200
理论分子量	37kDa
实测分子量	40/28kDa
形式	Liquid
保存条件	Store at -20°C. Avoid freeze / thaw cycles. Buffer: PBS with 0.75% BSA,50% glycerol,pH7.3.
偶联物	Unconjugated
阳性对照	HepG2,A-549,Mouse liver,Mouse kidney,Rat liver,Rat kidney
细胞定位	Lysosome
纯化	Affinity purification

抗原信息

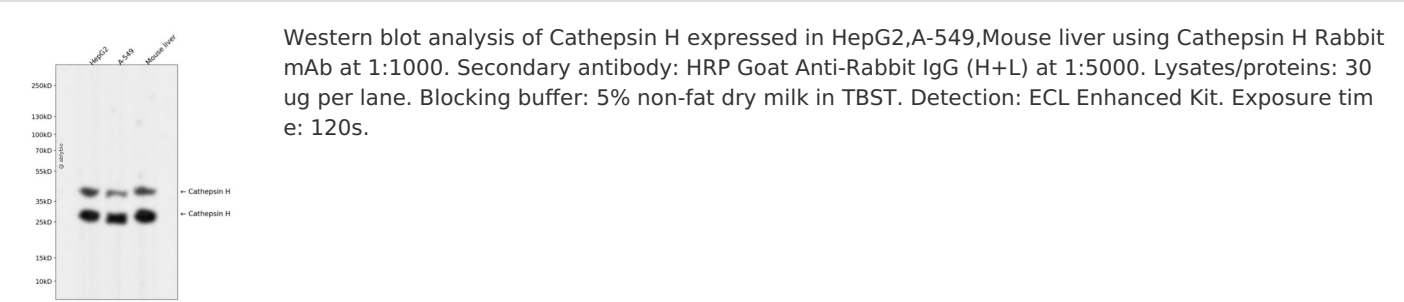
抗原信息	Recombinant fusion protein corresponding to Human Cathepsin H.
序列	AELCVNSLEKFHFKSWMSKHRKTYSTEEYHHRLQTFASNWRKINAHNNGNHTFKMALNQFSDMSFAEIKHKYLWSEPQN CSATKSNYLRGTGPYPSPVDWRKKGNFVSPVKNQGACGS

靶点信息

研究背景	The protein encoded by this gene is a lysosomal cysteine proteinase important in the overall degradation of lysosomal proteins. It is composed of a dimer of disulfide-linked heavy and light chains, both produced from a single protein precursor. The encoded protein, which belongs to the peptidase C1 protein family, can act both as an aminopeptidase and as an endopeptidase. Increased expression of this gene has been correlated with malignant progression of prostate tumors. Alternate splicing of this gene results in multiple transcript variants encoding different isoforms.
------	--

基因ID	1512
基因名	CTSH
Swiss	P09668
别名	CTSH;ACC-4;ACC-5;ACC4;ACC5;CPSB

产品验证



实验步骤

访问官网浏览详情: www.ablybio.cn