

KLK2 Rabbit mAb

货号: B29559

产品信息

反应	Human,Mouse,Rat
宿主	Rabbit
克隆性	Monoclonal
预测反应	
应用	WB IF/ICC
推荐浓度	WB: 1:500 - 1:2000 IF/ICC: 1:50 - 1:200
理论分子量	17kDa/18kDa/24kDa/28kDa
实测分子量	33kDa
形式	Liquid
保存条件	Store at -20°C. Avoid freeze / thaw cycles. Buffer: PBS with 0.75% BSA,50% glycerol,pH7.3.
偶联物	Unconjugated
阳性对照	DU145,Mouse pancreas
细胞定位	extracellular exosome,extracellular region
纯化	Affinity purification

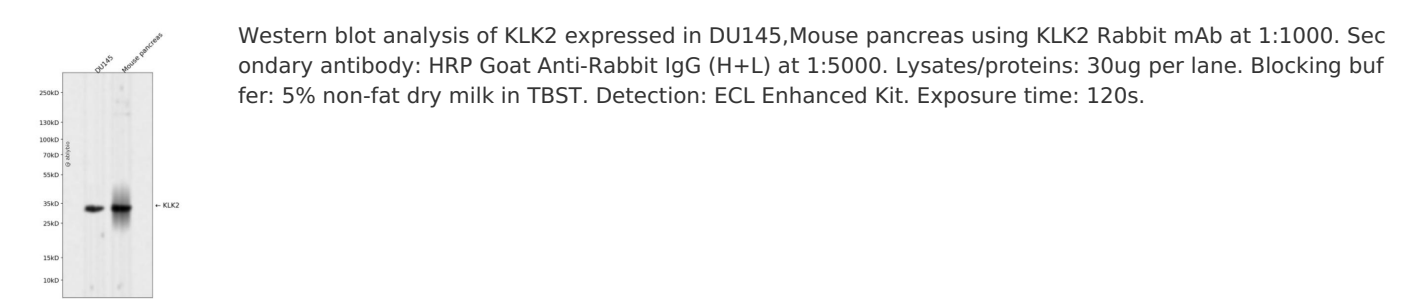
抗原信息

抗原信息	Recombinant fusion protein corresponding to Human KLK2.
序列	IVGGWECEKHSQPWQVAVYSHGWAHCGGVLVHPQWVLTAAHCLKKNSQVWLGRHNLFEPEDTGQRVPVSHSFPHPLY NMSLLKHQSLRPDEDSSHDLMLLRLSEPAKITDVVKVLGLPTQEPALGTTTCYASGWGSIEPEEFLRPRSLQCVSLHLLSND MCARAYSEKVTEFMLCAGLWTGGKDTCCGGDSGGPLVCNGVLQGITSWGPEPCALPEKPAVYTKVVHYR

靶点信息

研究背景	This gene encodes a member of the grandular kallikrein protein family. Kallikreins are a subgroup of serine proteases that are clustered on chromosome 19. Members of this family are involved in a diverse array of biological functions. The protein encoded by this gene is a highly active trypsin-like serine protease that selectively cleaves at arginine residues. This protein is primarily expressed in prostatic tissue and is responsible for cleaving pro-prostate-specific antigen into its enzymatically active form. This gene is highly expressed in prostate tumor cells and may be a prognostic maker for prostate cancer risk. Alternate splicing results in both coding and non-coding transcript variants.
基因ID	3817
基因名	KLK2
Swiss	P20151
别名	KLK2;KLK2A2;hGK-1;hK2

产品验证



实验步骤

访问官网浏览详情: www.ablybio.cn