

CBX2 Rabbit mAb

货号: B29538

产品信息

反应	Human,Mouse,Rat
宿主	Rabbit
克隆性	Monoclonal
预测反应	
应用	WB FC
推荐浓度	WB: 1:500 - 1:2000 FC: 1:20 - 1:50
理论分子量	56kDa
实测分子量	56kDa
形式	Liquid
保存条件	Store at -20°C. Avoid freeze / thaw cycles. Buffer: PBS with 0.75% BSA,50% glycerol,pH7.3.
偶联物	Unconjugated
阳性对照	HT-29,293T,Mouse liver,Mouse testis,Mouse brain,Rat testis
细胞定位	Nucleus
纯化	Affinity purification

抗原信息

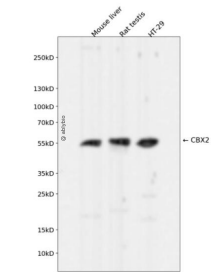
抗原信息	Recombinant fusion protein corresponding to Human CBX2.
序列	GSATPSGQESRTAPGEARKAATLPEMSAGEESSSSDSDPDSASPPSTGQNPSVSVQTSQDWKPTRSLIEHVFVTDVTAN LITVTVKESPTSVGFFNLRHY

靶点信息

研究背景	This gene encodes a component of the polycomb multiprotein complex, which is required to maintain the transcriptionally repressive state of many genes throughout development via chromatin remodeling and modification of histones. Disruption of this gene in mice results in male-to-female gonadal sex reversal. Mutations in this gene are also associated with gonadal dysgenesis in humans. Alternatively spliced transcript variants encoding different isoforms have been noted for this gene.[provided by RefSeq, Mar 2010]
基因ID	84733

基因名	CBX2
Swiss	Q14781
别名	CDCA6; M33; SRXY5

产品验证



Western blot analysis of CBX2 expressed in Mouse liver,Rat testis,HT-29 using CBX2 Rabbit mAb at 1:10 00. Secondary antibody: HRP Goat Anti-Rabbit IgG (H+L) at 1:5000. Lysates/proteins: 30ug per lane. B locking buffer: 5% non-fat dry milk in TBST. Detection: ECL Enhanced Kit. Exposure time: 120s.

实验步骤

访问官网浏览详情: www.ablybio.cn