

# Phospho-Estrogen Receptor alpha (S118) Rabbit mAb

货号: B29510

产品信息

|       |   |
|-------|---|
| 反应    | Human   |
| 宿主    | Rabbit  |
| 克隆性   | Monoclonal  |
| 预测反应  |   |
| 应用    | WB IHC IF/ICC   |
| 推荐浓度  | <b>WB:</b> 1:500 - 1:2000<br><b>IHC:</b> 1:50 - 1:200<br><b>IF/ICC:</b> 1:50 - 1:200  |
| 理论分子量 | 35kDa/47kDa/53kDa/66kDa   |
| 实测分子量 | 66kDa   |
| 形式    | Liquid  |
| 保存条件  | Store at -20°C. Avoid freeze / thaw cycles.<br>Buffer: PBS with 0.75% BSA,50% glycerol,pH7.3.   |
| 偶联物   | Unconjugated  |
| 阳性对照  | MCF7  |
| 细胞定位  | Cell membrane,Cytoplasm,Cytoplasmic side,Cytoplasmic side,Golgi apparatus,Nucleus,Peripheral membrane protein,Single-pass type I membrane protein |
| 纯化    | Affinity purification   |

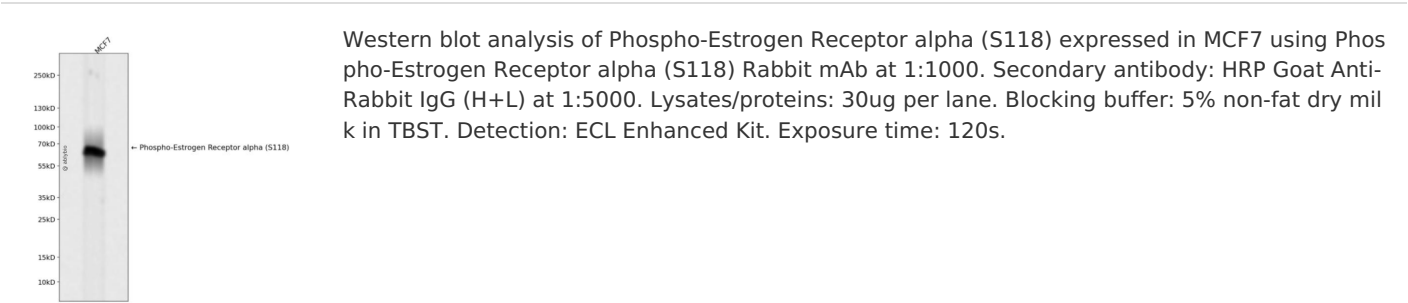
抗原信息

|      |   |
|------|---|
| 抗原信息 | Recombinant fusion protein corresponding to Human Phospho-Estrogen Receptor alpha (S118). |
| 序列   | QLSPF   |

靶点信息

|       |   |
|-------|---|
| 研究背景  | This gene encodes an estrogen receptor, a ligand-activated transcription factor composed of several domains important for hormone binding, DNA binding, and activation of transcription. The protein localizes to the nucleus where it may form a homodimer or a heterodimer with estrogen receptor 2. Estrogen and its receptors are essential for sexual development and reproductive function, but also play a role in other tissues such as bone. Estrogen receptors are also involved in pathological processes including breast cancer , endometrial cancer, and osteoporosis. Alternative promoter usage and alternative splicing result in dozens of transcript variants, but the full-length nature of many of these variants has not been determined. |
| 基因ID  | 2099  |
| 基因名   | ESR1  |
| Swiss | P03372  |
| 别名    | ESR1;ER;ESR;ESRA;ESTRR;Era;NR3A1;ER alpha   |

产品验证



实验步骤

访问官网浏览详情: [www.ablybio.cn](http://www.ablybio.cn)