

Myosin heavy chain Rabbit mAb

货号: B29462

产品信息

| | |
|-------|---|
| 反应 | Human,Mouse,Rat |
| 宿主 | Rabbit |
| 克隆性 | Monoclonal |
| 预测反应 | |
| 应用 | WB IHC |
| 推荐浓度 | WB: 1:500 - 1:2000 IHC: 1:50 - 1:200 |
| 理论分子量 | 224kDa |
| 实测分子量 | 224kDa |
| 形式 | Liquid |
| 保存条件 | Store at -20°C. Avoid freeze / thaw cycles. Buffer: PBS with 0.75% BSA,50% glycerol,pH7.3. |
| 偶联物 | Unconjugated |
| 阳性对照 | Mouse lung,Mouse skeletal muscle,Rat heart |
| 细胞定位 | Cytoplasm,myofibril |
| 纯化 | Affinity purification |

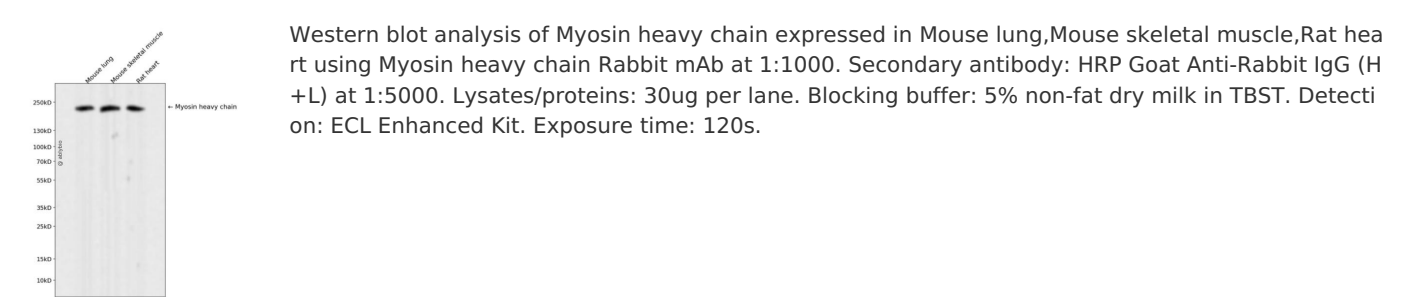
抗原信息

| | |
|------|--|
| 抗原信息 | Recombinant fusion protein corresponding to Human Myosin heavy chain. |
| 序列 | VAELGEQIDNLQRVKQKLEKEKSEFKLELDDVTSNMEQIIKAKANLEKMCRTLEDQMNEHRSKAEETQRSVNDLTSQRAKL QTENGELSRQLDEKEALISQLTRGKLYTQQLDLKRQLEEEVKAKNALAHALQSARHDCDLLREQYEEETEAKAELQRVL SKANSEVAQWRTKYETDAIQRTTEELEEAKKKLAQRLQEA |

靶点信息

| | |
|-------|--|
| 研究背景 | Muscle myosin is a hexameric protein containing 2 heavy chain subunits, 2 alkali light chain subunits, and 2 regulatory light chain subunits. This gene encodes the beta (or slow) heavy chain subunit of cardiac myosin. It is expressed predominantly in normal human ventricle. It is also expressed in skeletal muscle tissues rich in slow-twitch type I muscle fibers. Changes in the relative abundance of this protein and the alpha (or fast) heavy subunit of cardiac myosin correlate with the contractile velocity of cardiac muscle. Its expression is also altered during thyroid hormone depletion and hemodynamic overloading. Mutations in this gene are associated with familial hypertrophic cardiomyopathy, myosin storage myopathy, dilated cardiomyopathy, and Laing early-onset distal myopathy. [provided by RefSeq, Jul 2008] |
| 基因ID | 4625,4624 |
| 基因名 | MYH7,MYH6 |
| Swiss | P12883/P13533 |
| 别名 | CMD1S; CMH1; MPD1; MYHCB; SPMD; SPMM |

产品验证



实验步骤

访问官网浏览详情: www.ablybio.cn