

Estrogen Related Receptor alpha Rabbit mAb

货号: B29423

产品信息

反应	Human,Mouse,Rat
宿主	Rabbit
克隆性	Monoclonal
预测反应	
应用	WB IP FC
推荐浓度	WB: 1:500 - 1:2000 IP: 1:20 - 1:50 FC: 1:20 - 1:50
理论分子量	45kDa
实测分子量	55kDa
形式	Liquid
保存条件	Store at -20°C. Avoid freeze / thaw cycles. Buffer: PBS with 0.75% BSA,50% glycerol,pH7.3.
偶联物	Unconjugated
阳性对照	293T,Mouse kidney,Mouse heart,Rat heart
细胞定位	Nucleus
纯化	Affinity purification

抗原信息

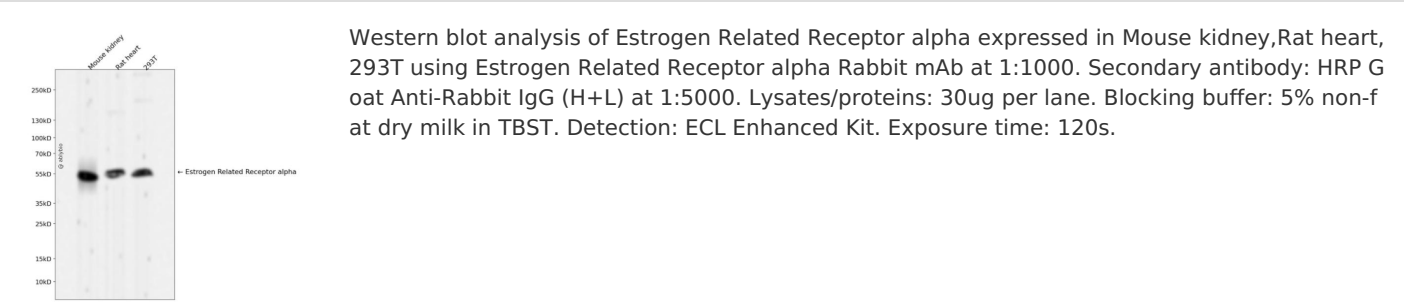
抗原信息	Recombinant fusion protein corresponding to Human Estrogen Related Receptor alpha.
序列	MSSQVVGIEPLYIKAEPASPDSPKGSSETETETPPVALAPGPAPTRCLPGHKEEDGEGAGPGEQGGGKLVLSLSPK

靶点信息

研究背景	The protein encoded by this gene is a nuclear receptor that is closely related to the estrogen receptor. Th is protein acts as a site-specific transcription regulator and has been also shown to interact with estrogen and the transcripton factor TFIIIB by direct protein-protein contact. The binding and regulatory activities o f this protein have been demonstrated in the regulation of a variety of genes including lactoferrin, osteop ontin, medium-chain acyl coenzyme A dehydrogenase (MCAD) and thyroid hormone receptor genes. A pr ocessed pseudogene of ESRRA is located on chromosome 13q12.1. Alternatively spliced transcript variant s have been found for this gene.
------	--

基因ID	2101
基因名	ESRRA
Swiss	P11474
别名	ESRRA;ERR1;ERRa;ERRalpha;ESRL1;NR3B1

产品验证



实验步骤

访问官网浏览详情: www.ablybio.cn