

# PITX3 Rabbit mAb

货号: **B29420**

## 产品信息

反应	Human,Mouse,Rat
宿主	Rabbit
克隆性	Monoclonal
预测反应	
应用	WB IP FC
推荐浓度	<b>WB:</b> 1:500 - 1:2000 <b>IP:</b> 1:20 - 1:50 <b>FC:</b> 1:20 - 1:50
理论分子量	31kDa
实测分子量	32kDa
形式	Liquid
保存条件	Store at -20°C. Avoid freeze / thaw cycles. Buffer: PBS with 0.75% BSA,50% glycerol,pH7.3.
偶联物	Unconjugated
阳性对照	293T,U-87MG,Mouse heart,Rat kidney,Rat brain
细胞定位	Nucleus
纯化	Affinity purification

## 抗原信息

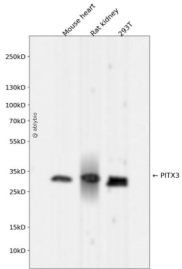
抗原信息	Recombinant fusion protein corresponding to Human PITX3.
序列	MEFGLLSEAEARSPALSLSDAGTPHPQLPEHGCKGQEHS DSEKASASLPGGSPEDGSLKKKQRRQRTHFT

## 靶点信息

研究背景	This gene encodes a member of the RIEG/PITX homeobox family, which is in the bicoid class of homeodomain proteins. Members of this family act as transcription factors. This protein is involved in lens formation during eye development. Mutations of this gene have been associated with anterior segment mesenchymal dysgenesis and congenital cataracts.
基因ID	5309

基因名	PITX3
Swiss	O75364
别名	PITX3;ASGD1;ASMD;ASOD;CTPP4;CTRCT11;PTX3

## 产品验证



Western blot analysis of PITX3 expressed in Mouse heart,Rat kidney,293T using PITX3 Rabbit mAb at 1:1000. Secondary antibody: HRP Goat Anti-Rabbit IgG (H+L) at 1:5000. Lysates/proteins: 30ug per lane. Blocking buffer: 5% non-fat dry milk in TBST. Detection: ECL Enhanced Kit. Exposure time: 120s.

## 实验步骤

访问官网浏览详情: [www.ablybio.cn](http://www.ablybio.cn)