

MMP11 Rabbit mAb

货号: B29393

产品信息

反应	Human,Mouse,Rat
宿主	Rabbit
克隆性	Monoclonal
预测反应	
应用	WB IHC IF/ICC
推荐浓度	WB: 1:500 - 1:2000 IHC: 1:50 - 1:200 IF/ICC: 1:50 - 1:200
理论分子量	54kDa
实测分子量	55kDa
形式	Liquid
保存条件	Store at -20°C. Avoid freeze / thaw cycles. Buffer: PBS with 0.75% BSA,50% glycerol,pH7.3.
偶联物	Unconjugated
阳性对照	Raji,293T,Mouse lung,Mouse kidney,Mouse skeletal muscle,Mouse ovary,Mouse heart
细胞定位	Secreted,extracellular matrix,extracellular space
纯化	Affinity purification

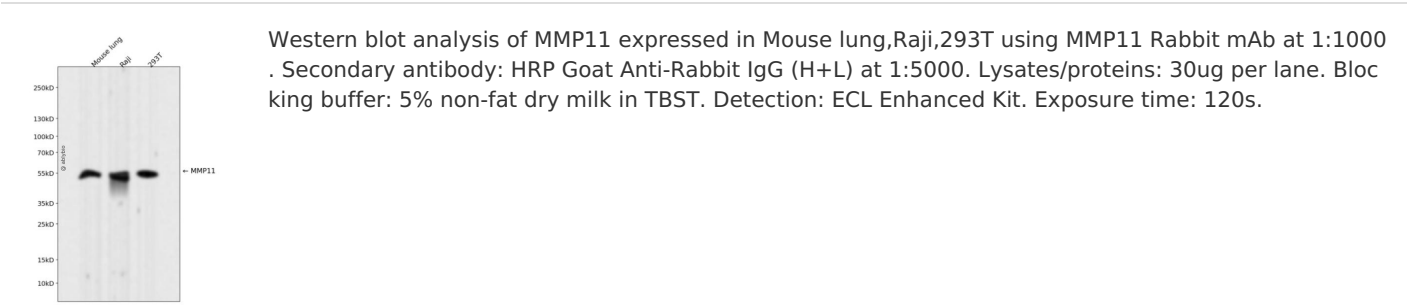
抗原信息

抗原信息	Recombinant fusion protein corresponding to Human MMP11.
序列	FRYPLSLSPDDCRGVQHLYGQPWPTVTSRTPALGPQAGIDTNEIAPLEPDAPPDACEASFDAVSTIRGELFFFKAGFVWRL RGGQLQPGYPALASRHWQGLPSPVDAAFEDAQGHIWFFQGAQYWVYDGEKPVLGPAPLTELGLVRFPVHAALVWGPEK NKIYFFRGRDYWRFHPSTRRVDSPPVRRATDWRGVSEIDAAFQDADGYAYFLRGRLYWKFDPVKVKALEGFPRLVGPD FFGCAEPANTFL

靶点信息

研究背景	Proteins of the matrix metalloproteinase (MMP) family are involved in the breakdown of extracellular matrix in normal physiological processes, such as embryonic development, reproduction, and tissue remodeling, as well as in disease processes, such as arthritis and metastasis. Most MMP's are secreted as inactive proproteins which are activated when cleaved by extracellular proteinases. However, the enzyme encoded by this gene is activated intracellularly by furin within the constitutive secretory pathway. Also in contrast to other MMP's, this enzyme cleaves alpha 1-proteinase inhibitor but weakly degrades structural proteins of the extracellular matrix.
基因ID	4320
基因名	MMP11
Swiss	P24347
别名	MMP11;SL-3;ST3;STMY3

产品验证



实验步骤

访问官网浏览详情: www.ablybio.cn