

# RASSF1 Rabbit mAb

货号: B29351

产品信息

|       |  |
|-------|--|
| 反应    | Human  |
| 宿主    | Rabbit   |
| 克隆性   | Monoclonal   |
| 预测反应  |  |
| 应用    | WB IHC   |
| 推荐浓度  | <b>WB:</b> 1:500 - 1:2000<br><b>IHC:</b> 1:50 - 1:200  |
| 理论分子量 | 8kDa/9kDa/16kDa/21kDa/31kDa/38kDa/39kDa  |
| 实测分子量 | 39kDa  |
| 形式    | Liquid   |
| 保存条件  | Store at -20°C. Avoid freeze / thaw cycles.<br>Buffer: PBS with 0.75% BSA,50% glycerol,pH7.3.        |
| 偶联物   | Unconjugated   |
| 阳性对照  | HeLa,HepG2,293T,SW480  |
| 细胞定位  | Cytoplasm,Nucleus,Nucleus,centrosome,cytoskeleton,microtubule organizing center,spindle,spindle pole |
| 纯化    | Affinity purification  |

抗原信息

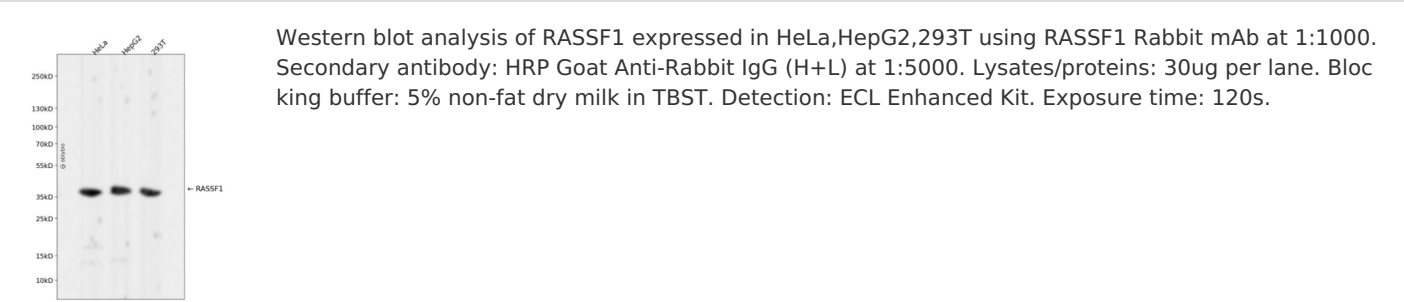
|      |   |
|------|---|
| 抗原信息 | Recombinant fusion protein corresponding to Human RASSF1.   |
| 序列   | CCGPRDLGWEPVERDTNVDEPVEWETPDLSQAEIEQKIKEYNAQINSNLFMSLNKDGSYTGFIKVQLKLRPVSVPSSKK<br>PPSLQDARRGPGRGTSVRRRTSFYLPKDAVKHLHVLSTRAREVIEALLRKFLVVDDPRKFALFERAERHGQVYLRKLLDD<br>EQPLRLRLLAGPSDKALSFVLKENDSGEVNWDAFSMPELHNFLRLQREEEHLRQILQKYSYCRQKIQEALHACPLG |

靶点信息

|      |  |
|------|--|
| 研究背景 | This gene encodes a protein similar to the RAS effector proteins. Loss or altered expression of this gene has been associated with the pathogenesis of a variety of cancers, which suggests the tumor suppressor function of this gene. The inactivation of this gene was found to be correlated with the hypermethylation of its CpG-island promoter region. The encoded protein was found to interact with DNA repair protein XPA. The protein was also shown to inhibit the accumulation of cyclin D1, and thus induce cell cycle arrest. Several alternatively spliced transcript variants of this gene encoding distinct isoforms have been reported. |
|------|--|

|       |   |
|-------|---|
| 基因ID  | 11186                                     |
| 基因名   | RASSF1                                    |
| Swiss | Q9NS23                                    |
| 别名    | RASSF1;123F2;NORE2A;RASSF1A;RDA32;REH3P21 |

产品验证



实验步骤

访问官网浏览详情: [www.ablybio.cn](http://www.ablybio.cn)