

Cyclin D1 Rabbit mAb

货号: B29307

产品信息

反应	Human,Mouse,Rat
宿主	Rabbit
克隆性	Monoclonal
预测反应	
应用	WB IHC IF/ICC IP
推荐浓度	WB: 1:500 - 1:2000 IHC: 1:50 - 1:200 IF/ICC: 1:50 - 1:200 IP: 1:20 - 1:50
理论分子量	34kDa
实测分子量	34kDa
形式	Liquid
保存条件	Store at -20°C. Avoid freeze / thaw cycles. Buffer: PBS with 0.75% BSA,50% glycerol,pH7.3.
偶联物	Unconjugated
阳性对照	HepG2,MCF7,Mouse lung,HeLa
细胞定位	Cytoplasm,Membrane,Nucleus
纯化	Affinity purification

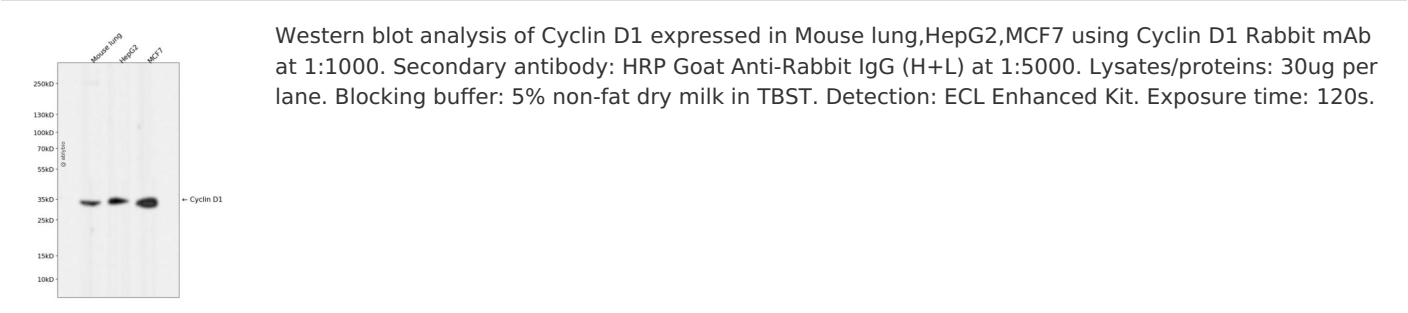
抗原信息

抗原信息	Recombinant fusion protein corresponding to Human Cyclin D1.
序列	ISNPPSMVAAGSVVAQGLNLRSPNNFLSYRLTRFLSRVIKCDPDCLRACQEIQIEALLESSLRQAQQNMDPKAAEEEEEE EEVDLACTPTDVRDVDI

靶点信息

研究背景	The protein encoded by this gene belongs to the highly conserved cyclin family, whose members are characterized by a dramatic periodicity in protein abundance throughout the cell cycle. Cyclins function as regulators of CDK kinases. Different cyclins exhibit distinct expression and degradation patterns which contribute to the temporal coordination of each mitotic event. This cyclin forms a complex with and functions as a regulatory subunit of CDK4 or CDK6, whose activity is required for cell cycle G1/S transition. This protein has been shown to interact with tumor suppressor protein Rb and the expression of this gene is regulated positively by Rb. Mutations, amplification and overexpression of this gene, which alters cell cycle progression, are observed frequently in a variety of tumors and may contribute to tumorigenesis. [provided by RefSeq, Jul 2008]
基因ID	595
基因名	CCND1
Swiss	P24385
别名	BCL1;D11S287E;PRAD1;U21B31;CCND1;Cyclin D1;cyclin D1

产品验证



实验步骤

访问官网浏览详情: www.ablybio.cn